

# Boeís

Written & Performed By  
Baruch Levine

♩=175

Rock

(Intro)

(N.C.)

Ab

Gmi<sup>7</sup> Cmi

Cmi

F

Ab

Gmi

**A**

1. Eb Fmi G

2. Eb Fmi Gmi<sup>7</sup> Cmi

Ab

Eb

Ab

Eb

**B**

Ab

F

Ab

Bb

Fmi

Bb

Ab

Bb

Ab

Gmi<sup>7</sup>

1. Cmi

2. Cmi



# V'zakeini

Written & Performed By  
Baruch Levine

♩=70

Ballad

Cmi Gmi Fmi Cmi Ab Eb

Fmi Ab Eb Fmi Cmi Ab Bb Cmi

Cmi F Fmi Fmi G Cmi

Eb Ebma7 Fmi Fmi Cmi Bb Ab Bb

1. Cmi Ab Bb 2. Cmi Ab Bb

Cmi Gmi Ab Eb

Cmi Gmi Ab Fmi Gmi 1. Cmi Ab Bb 2. Cmi



♩=115

# Shomer Yisroel

Written & Performed By  
Baruch Levine

**Disco/Middle Eastern**

(Intro)

Dmi

C

Ami

Dmi

Gmi

F

Dmi



Dmi

C

Ami

Dmi

Gmi

F

C

Dmi

Cmi

Dmi

C

Dmi



Dmi

Gmi

Dmi

Cmi

Dmi

Dmi

Dmi

Dmi

Dmi

Dmi

Dmi

Gmi

Dmi



Dmi

Gmi

Dmi

Cmi

Dmi

Dmi

Dmi

F

G

1. Bb

C

Dmi

2. Bb

C

Dmi



Gmi

Eb

Dmi

Gmi

C



Gmi

Eb

Dmi

C

G

Bb

C

Dmi



Dmi

Bb

Ami

Bb

C

Dmi



Dmi

Bb

Ami

G

Bb

C

Bb

Dmi



# V'hoo

Written & Performed By  
Baruch Levine

**Slow...**

(Intro) Dmi /C Bb Ami Bb Ami Dmi /C

Bb /A Gmi C Ami Bb

Bmi7(b5) C Bb Ami Dmi

**A** Dmi Bb Dmi Bb C Ami

Dmi Gmi Bb C

Bb Ami 1. Dmi 2. Dmi

**B** Dmi Bb F C Dmi Bb

Ami Gmi F Dmi C

1. Ami 2. Ami Dmi



# Higid

Written & Performed By  
Baruch Levine

♩=165

**Rock**

(Intro) B $\flat$  E $\flat$  B $\flat$  Gmi F

B $\flat$  E $\flat$  1. B $\flat$  F

2. B $\flat$  F7 B $\flat$  F

**A** B $\flat$  E $\flat$  B $\flat$  F B $\flat$

E $\flat$  1. B $\flat$  F 2. B $\flat$  F7 B $\flat$

**B** Dmi E $\flat$  B $\flat$

Dmi E $\flat$  F

Gmi E $\flat$  B $\flat$  F/A Gmi Gmi/F

E $\flat$  F B $\flat$



# Elokai

Written & Performed By  
Baruch Levine

Ballad - 'Slow 6'

(Intro)

Cmi Bb Ab Gmi Ab Gmi Ab Eb/G Fmi Eb



Eb Cmi Fmi Fmi Bb



Eb Cmi Fmi



Ab Bb Gmi Cmi



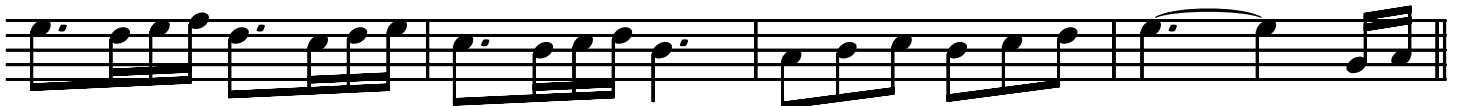
Ab Bb Gmi Ab Bb



Cmi Bb Ab Gmi Ab Bb Cmi



Cmi Bb Ab Gmi Ab Bb Eb



Eb Ab Eb Cmi Bb Ab Eb/G Fmi Eb



Eb Ab Eb Cmi Bb 1. Ab Eb Fmi Eb 2. Ab Eb Fmi Eb



♩=110

Middle Eastern

# Hoidu

Written & Performed By  
Baruch Levine

Musical score for guitar, featuring six staves of music with chord annotations. The score is written in 4/4 time and includes various musical notations such as treble clef, notes, rests, and repeat signs.

Staff 1: Chords: Ami, G, F, Emi, F, G

Staff 2: Chords: Ami, G, F, Emi, Ami

Staff 3: Chords: Ami, Emi, Dmi, G, Ami, Ami

Staff 4: Chords: Emi, F, C, Dmi, E, G, Ami

Staff 5: Chords: Ami, F, G, Emi

Staff 6: Chords: Dmi, Emi, G, F, Emi



♩=70

# Es Tzemach

Written & Performed By  
Baruch Levine

**Ballad**

**(Intro)**

Cmi Fmi Cmi Fmi Cmi Fmi Cmi G

Cmi Fmi Eb Bb Ab Bb Cmi

**A** Cmi Fmi Cmi Cmi C7 Fmi

Ab Eb G7 Cmi Fmi Dmi7(b5) 1. G 2. G

**B** Cmi Fmi Cmi Fmi Cmi Bb Gmi Ab Bb

Cmi Fmi Cmi Fmi Cmi Bb Gmi Cmi





# Galei

Written & Performed By  
Baruch Levine

**Freilach**

(Intro)

Fmi Cmi G7 Cmi Fmi

Fmi Cmi G7 Cmi

**A** Fmi Cmi Eb Bb

Fmi Cmi Fmi Bb 1. Cmi 2. Cmi

**B** Cmi Bb Fmi Cmi

Ab Bb Fmi Bb 1. Cmi 2. Cmi



# Shma Koleinu

Written & Performed By  
Baruch Levine

Slow....

(Intro) Dmi C Gmi Dmi

Dmi Ami/C Bb

Gmi Gmi/F Eb Dmi

Bb Gmi<sup>7</sup> Asus<sup>4</sup>

A Dmi Gmi C Dmi

Dmi Gmi C G

Gmi Dmi F C

<sup>1.</sup> Gmi A<sup>7</sup> Dmi

Contd/...

