

PIANO MAN

Words and Music by
Billy Joel

Moderately

mf

1st time, directly to verse

Last time, Fine

slower

C

Em/B bass

Am

C/G bass

1. It's nine o'clock on a Saturday, The
 (2. Now) John at the bar is a friend of mine, He
 (3. Now) Paul is a real-estate nov-el-ist, Who
 (4. It's a) pret-ty good crowd for a Sat-ur-day, And the

mp



C/E bass



reg - u - lar crowd shuf - fles in There's an old man
 gets me my drinks for free, And he's quick with a
 nev - er had time for a wife And he's talk - in' with
 man - ag - er gives me a smile 'Cause he knows that it's

Em/B bass



C/G bass



— sit - ting next to me Mak - in' love to his ton - ic and
 joke or to light up your smoke But there's some - place that he'd rath - er
 Dav - y who's still in the Nav - y And prob - ab - ly will be for
 me they've been com - in' to see To for - get a - bout life for a



F/C bass



Cmaj7



gin. He says, "Son, can you
 be. He says, "Bill, I be -
 life. And the wait - ress is
 while. And the pia - no

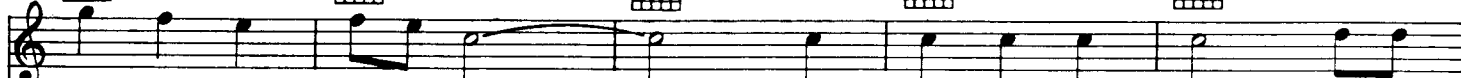
Em/B bass

Am

C/G bass

F

C/E bass



play me a mem - o - ry? I'm not real - ly sure how it
 lieve this is kill - ing me," As a smile ran a - way from his
 prac - tic - ing pol - i - tics, As the bus - 'ness - men slow - ly get
 sounds like a car - ni - val And the mic - ro - phone smells like a



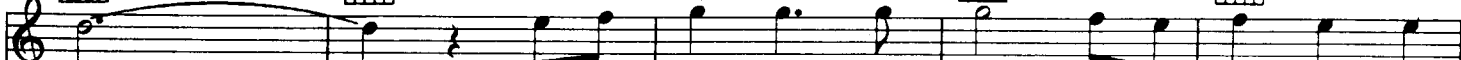
D7

G

C

Em/B bass

Am



goes, But it's sad and it's sweet and I knew it com -
 face "Well, I'm sure that I could be a mov - ie
 stoned Yes, they're shar - ing a drink they call lone - li -
 beer And they sit at the bar and put bread in my

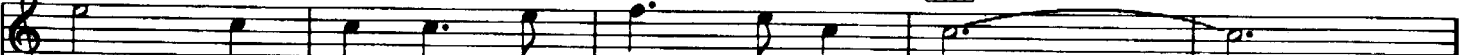


C/G bass

F

G11

C



plete When I wore a young - er man's clothes."
 star If I could get out of this place."
 ness But it's bet - ter than drink - in' a lone.
 jar And say "Man, what are you do - in' here?"



Am

Am/G bass

D7/F# bass

F

Am

Da da da de de da da da
 Da da da de de da da da
Instrumental
 Da da da de de da da da

Am/G bass

D7/F# bass

D7

G

G/F bass

de de da da da
 de de da da da
 de de da da da

C/E bass

G7/D bass

C

Em/B bass

Am

Sing us a song, you're the pia - no man

C/G bass



F



C/E bass



D7



Sing us a song to - night.

G



C



Em/B bass



Am



Well, we're all in the mood for a mel - o - dy.

C/G bass



F



G11



C



And you've got us feel - in' al - right.

F/C bass



Cmaj7



1, 2, 3.

G11



4.

G11



D. C. al Fine

- 2. Now
- 3. Now
- 4. It's a