

For Shin-ichi Fukuda  
**"HIKA"**  
 IN MEMORIAM TORU TAKEMITSU

Fingered by Composer & Shin-ichi Fukuda

LEO BROUWER

**Tempo Libero**

②=B<sup>7</sup>  
⑤=G

harm.12

harm.12

*mf* [like bells]  
鐘のようだよ...

*p*

**Andante (♩=100~104)**

**A**

harm.12

harm.12

*p* *legatissimo*  
(Let Vibrate)

harm.12

harm.12

harm.12

harm.12

harm.12

*rit.*

pizz.

harm.12

**B**

*legatissimo*

*lunga*

harm.12

*a tempo*

harm.12

rit. *ppp*

**C** **Tempo Libero**

harm. 12 *lunga* son ord. *lunga*

harm. 12 *mf* *p*

**Velocissimo** (♩ = 100 ~ 102)

*p* *ima* *lunga*

*f molto agitato*

**D** **Vivace** (♩ = 90 ~ 92)

son ord. *Metallique* son ord. *Metallique*

*f*

*Metallique* *gläss.* son ord. *gläss.*

③ ④

④  
*p sub.*

C.6

C.6  
*p f*  
 ④ ⑥

C.3  
*mf*

E  
*f marcato f p pp*

*p pp legato poco*  
 (cxi)

*sul tasto* *(diff. colour)* *rall. - -*

*P* *L.V.*

*rit.* *(♩=♩) Pos.6*

*pp* *(pp) leggerissimo*

*cresc. molto* *sf marcato* *pp ritmico*

*rit. - -* *(♩-♩)* *a tempo* *(diff. color)*

*pp leggerissimo*

*cresc. molto* *f marc.*

*rit.*

Tempo Libero

harm. 12

**F**

*mf*

*f marcato mollo*

*lunga*

Andante (♩=100~104)

C.3

*p legatissimo*

*legatissimo*

C.6

**G**

*pp sub. cresc. molto e accel.*

9:8

*marcatissimo*

**I.V.**

*pp cresc. molto e accel.*

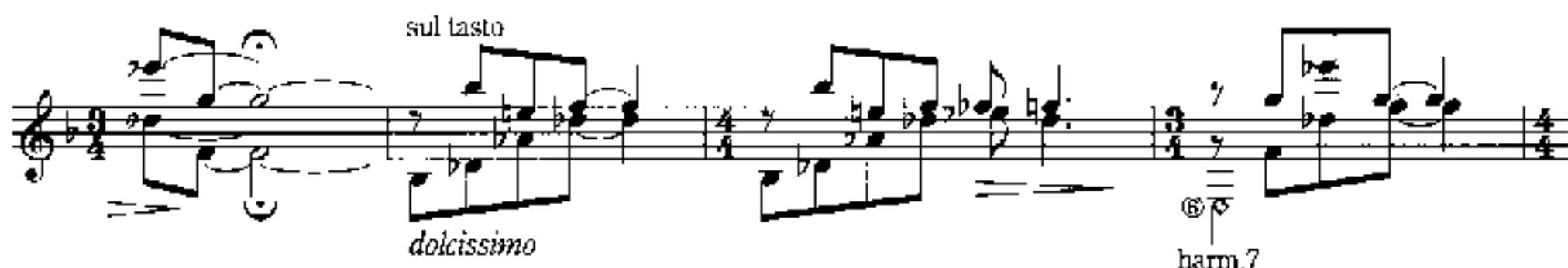
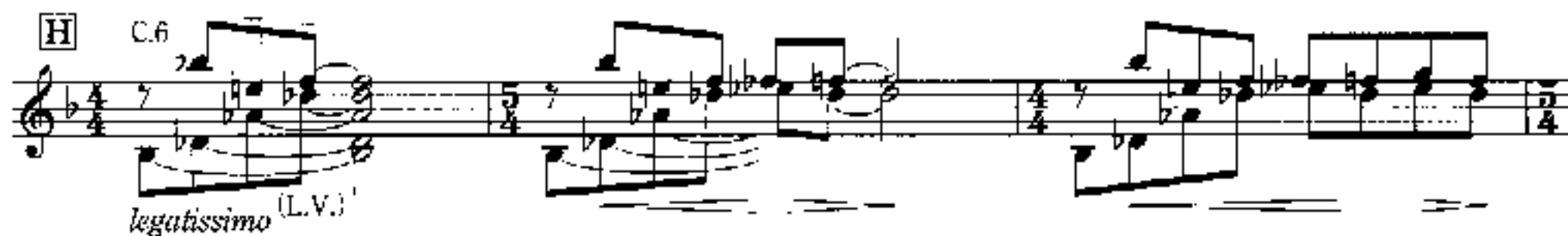
**Velocissimo**

6

6



### Andante (♩=100-104)



(Cordoba, July 1996)  
Duration = 6 min.