

1812

Violin 2

Arr. Joshua & Kelli

1 **Begin 56 bpm** 2

6

10

14

18

23 **Begin 132 bpm**

27

30



33



42



44



46



48



50

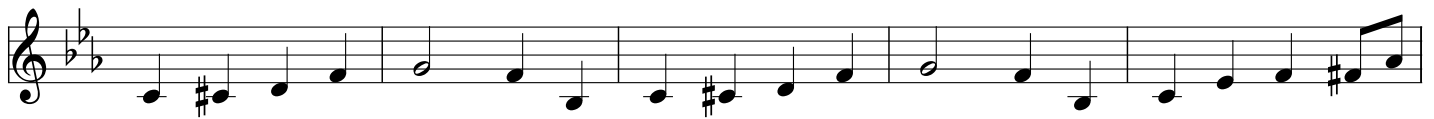


54



Begin 131 bpm

63



68



73



77



84



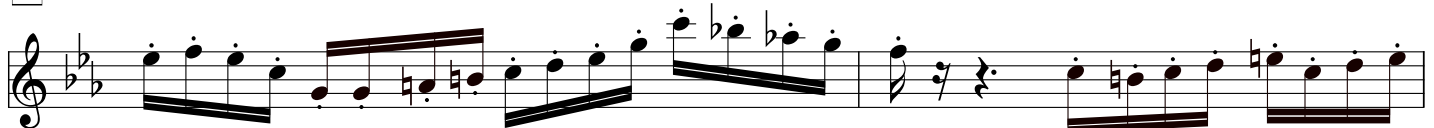
88



91



94

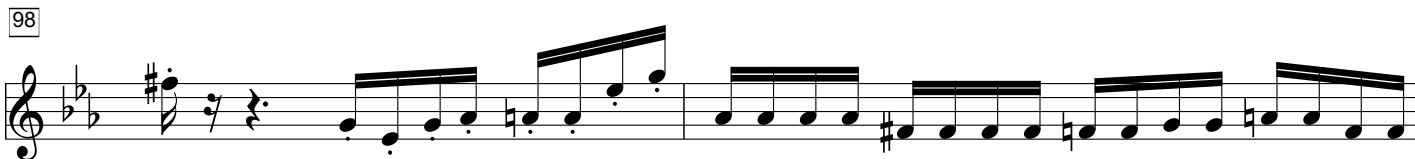


96



Musical notation for measure 96, starting with a treble clef and a key signature of two flats (B-flat and E-flat). The measure contains a half note G4, a quarter rest, and a quarter note A4. The second half of the measure contains a quarter note B4, a quarter note C5, a quarter note D5, and a quarter note E5.

98



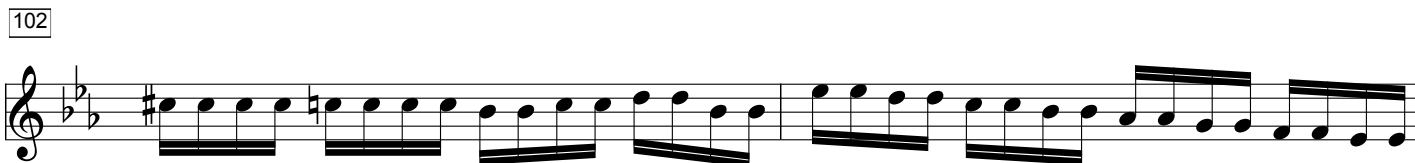
Musical notation for measure 98, starting with a treble clef and a key signature of two flats. The measure contains a half note F#4, a quarter rest, and a quarter note G4. The second half of the measure contains a quarter note A4, a quarter note B4, a quarter note C5, and a quarter note D5.

100



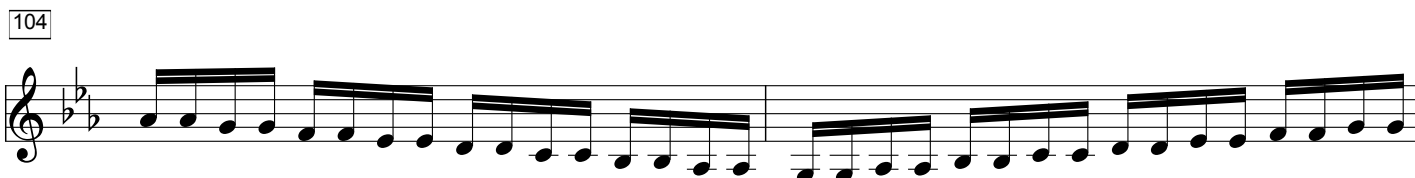
Musical notation for measure 100, starting with a treble clef and a key signature of two flats. The measure contains a quarter note E5, a quarter note D5, a quarter note C5, and a quarter note B4. The second half of the measure contains a quarter note A4, a quarter note G4, a quarter note F#4, and a quarter note E5.

102



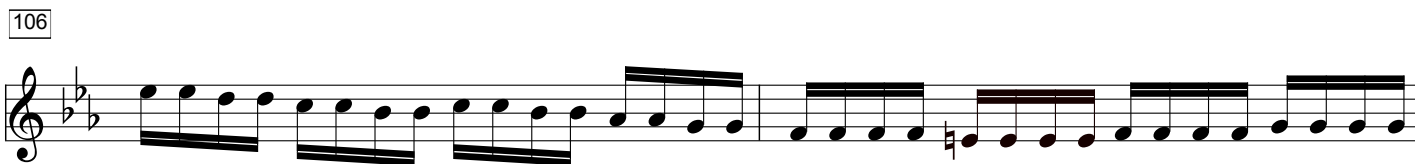
Musical notation for measure 102, starting with a treble clef and a key signature of two flats. The measure contains a quarter note D5, a quarter note C5, a quarter note B4, and a quarter note A4. The second half of the measure contains a quarter note G4, a quarter note F#4, a quarter note E5, and a quarter note D5.

104



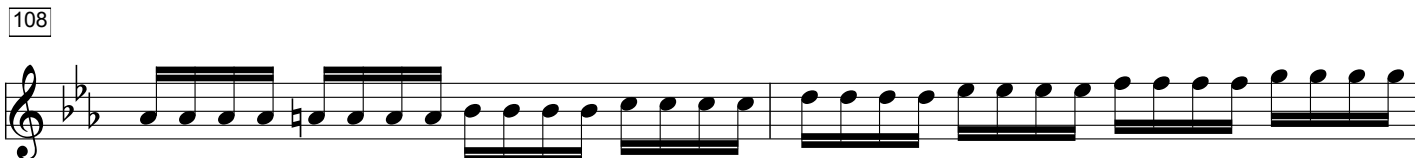
Musical notation for measure 104, starting with a treble clef and a key signature of two flats. The measure contains a quarter note C5, a quarter note B4, a quarter note A4, and a quarter note G4. The second half of the measure contains a quarter note F#4, a quarter note E5, a quarter note D5, and a quarter note C5.

106



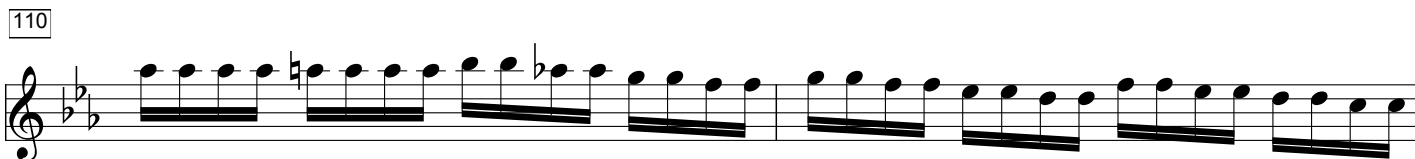
Musical notation for measure 106, starting with a treble clef and a key signature of two flats. The measure contains a quarter note B4, a quarter note A4, a quarter note G4, and a quarter note F#4. The second half of the measure contains a quarter note E5, a quarter note D5, a quarter note C5, and a quarter note B4.

108



Musical notation for measure 108, starting with a treble clef and a key signature of two flats. The measure contains a quarter note A4, a quarter note G4, a quarter note F#4, and a quarter note E5. The second half of the measure contains a quarter note D5, a quarter note C5, a quarter note B4, and a quarter note A4.

110



Musical notation for measure 110, starting with a treble clef and a key signature of two flats. The measure contains a quarter note G4, a quarter note F#4, a quarter note E5, and a quarter note D5. The second half of the measure contains a quarter note C5, a quarter note B4, a quarter note A4, and a quarter note G4.

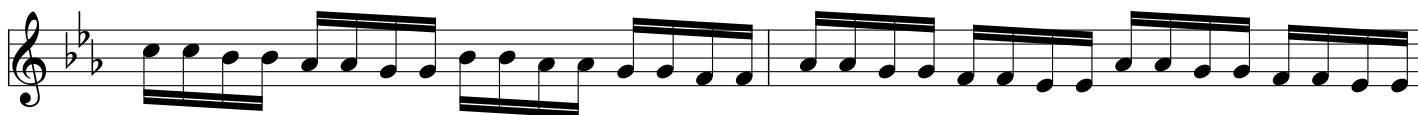
112



114



116



118



120



123

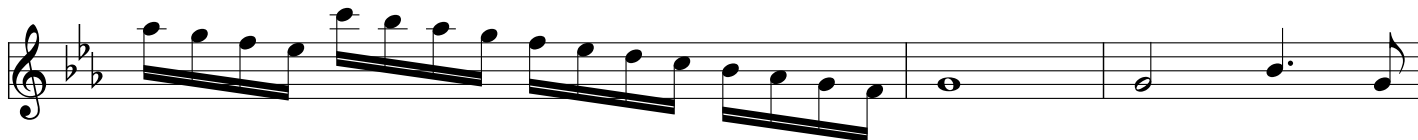


126


Begin 60 bpm



129

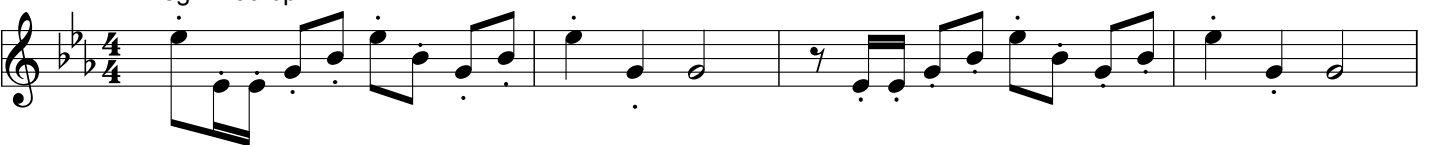


132




134

Begin 160 bpm



138




141




145



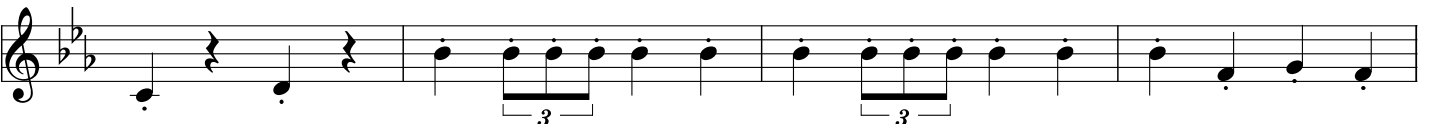
149



153



157



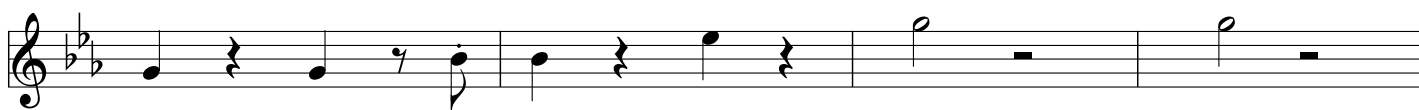
161



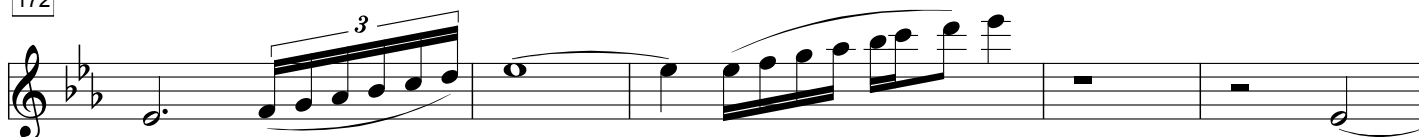
165



168



172



177

