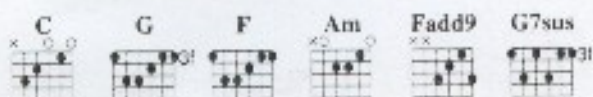


# TRULY MADLY DEEPLY



Andante ♩ = 83

Words and Music by  
by DANIEL JONES  
and DARREN HAYES

Treble clef: Rest, Rest, Rest, Rest  
 Grand staff: C, G, F, G

Treble clef: I'll be your dream, I'll be your wish, I'll be your fan - ta - sy. I'll be your hope, I'll be your  
 Grand staff: C, G, F

Treble clef: love. Be ev - ery - thing that you need. I'll love you more with ev - ery breath, Tru - ly, mad - ly, deep - ly do.  
 Grand staff: G, C, G

*C C C C C C C C C C C C C C A A*

I will be strong, I will be faith-ful 'cause I'm count-ing on a new be - gin - ning. A

F G Am

rea-son for li - ving. A deep - er mean - ing. yeah. I want to

G F G

stand with you on a moun - tain, I want to bathe you you in the sea.

C G Fadd9

*Handwritten notes:*  
e d e d e d  
e d e d e d

I want to lay like this for - ev - er. Un - til the

G C G

sky falls down on me. And when the stars are shin - ing

Fadd9 G C

bright - ly in the vel - vet sky. I'll make a wish send it to hea - ven, Then make you want to cry

G F G

- The tears of joy for all the plea - sure in the cer - tain - ty, That we're sur - roun - ded by the

C G F

com - fort and pro - tec - tion of the high - est pow - ers, In lone - ly ho - urs, The

G Am G

tears de - vo - ur you. I want to stand with you on a moun -

F G C

- rain, I want to bathe with you in the sea, I want to

G Fadd9 G

lay like this for - ev - er, Un-til the sky falls down on me.

C G Fadd9 G

Oh can you see it ba - by? You don't have to close your eyes

Fadd9 G7sus G Fadd9

'cause it's stand-ing right be-fore you... ooh. All that you need... will sure - ly come.

G7sus G Fadd9 G7sus G

Detailed description: This system contains the first two measures of the song. The vocal line is in a 7/8 time signature. The piano accompaniment consists of a treble and bass clef. The first measure has a G7sus chord in the treble and a G chord in the bass. The second measure has a Fadd9 chord in the treble and a G7sus chord in the bass, with a G chord in the treble in the final eighth note.

(ad lib solo)

C G Fadd9 G

Detailed description: This system contains the piano solo section. The vocal line is silent. The piano accompaniment features a treble clef with a melodic line and a bass clef with a simple harmonic accompaniment. The first measure has a C chord in both hands. The second measure has a G chord in the bass and a G chord in the treble. The third measure has a Fadd9 chord in the treble and a G chord in the bass. The fourth measure has a G chord in both hands.

I'll be your dream, I'll be your wish, I'll be your fan - ta - sy. I'll be your hope, I'll be your

C N.C.

Detailed description: This system contains the third and fourth measures. The vocal line continues with the lyrics. The piano accompaniment has a treble clef with a melodic line and a bass clef with a simple harmonic accompaniment. The first measure has a C chord in both hands. The second measure has no notes (N.C.) in both hands.

love, Be ev - ery - thing that you need... I'll love you more with ev - ery breath, Tru - ly, mad - ly, deep - ly, do -

C G

Detailed description: This system contains the fifth and sixth measures. The vocal line continues with the lyrics. The piano accompaniment has a treble clef with a melodic line and a bass clef with a simple harmonic accompaniment. The fifth measure has a C chord in both hands. The sixth measure has a G chord in both hands.

I want to stand with you on a moun - tain. I want to

F N.C. C G

bathe with you in the sea. I want to lay like this for - e -

Fadd9 G C

- ver, Un - til the sky falls down on me. (I want to)

(3 times)

G Fadd9 G

(ad lib solo)

C G Fadd9 G