

PIANO

SANTA BABY

GUITAR
VOCAL

C6 C9b5 E9 C° C6 Eb9 Dm7 C° G9

A vocal cues:
C6 . Am7 . D7 . G9 . C6 . Am7 . D7 . G9 . C6 . Am7 .

Bb9 Ab9 G9 . C6 - A7#9. Dm7 . G9 - C6 Fm7 - Bb9 C6 - - -

B E7 . Bm7 . E9 F9 E9 - A9 . Em7 - A9 D9 - Am7 .

D9 Eb9 D9 - G9 Eb° Dm7 - G9 A° G9 Db7 C6 - Am7 - D7 - G9 -

C6 - Am7 . D7 - G9 - C6 - Am7 - Bb9 Ab9 G9 C6 Fm7 - Bb9

C6 - - - D.S. (B) al Coda

C6 - A7#9. Dm7 - G9 - 4 Em7 Eb7 Dm7 Db9 C6

ALTO I

SANTA BABY

Unison

Musical staff with treble clef, key signature of two sharps (F# and C#), and 4/4 time signature. The melody begins with a *mf* dynamic marking.

Musical staff with bass clef, starting with a boxed section marker 'A'. It contains a bass line with *mp* dynamic marking.

Musical staff with treble clef, featuring two first endings labeled '1' and '2'. It includes *mf* and *mp* dynamic markings.

Musical staff with treble clef, continuing the melody with various dynamics and articulation marks.

Musical staff with bass clef, continuing the bass line with *mp* dynamic marking.

Musical staff with treble clef, ending with a double bar line, a *rit.* marking, and the instruction "D.S. (B) 2 Coda".

Empty musical staff.

Musical staff with bass clef, containing a few notes and a double bar line.

Empty musical staff with a large handwritten number '2' at the bottom right.

ALTO II

SANTA BABY

Unison

TENOR I

SANTA BABY

mf

A

mp

mf mp

mf

mp

mf mp

mf

TENOR II

SANTA BABY

Unison

mf

[A]

mp

mf

mf

mp

mp

mf

mp

Coda

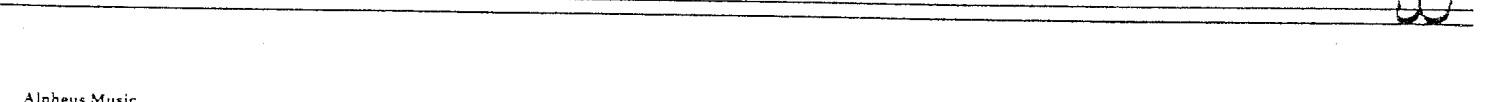
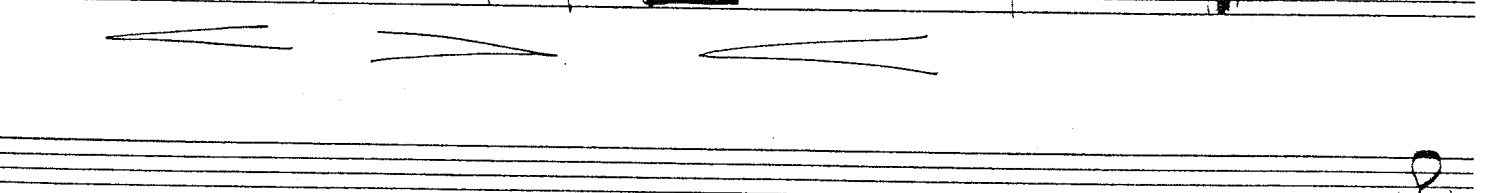
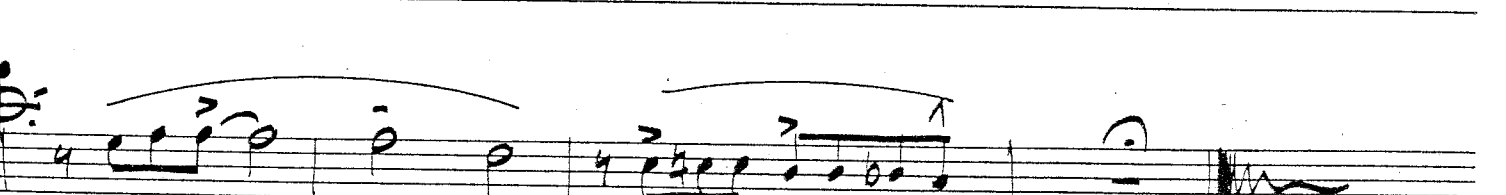
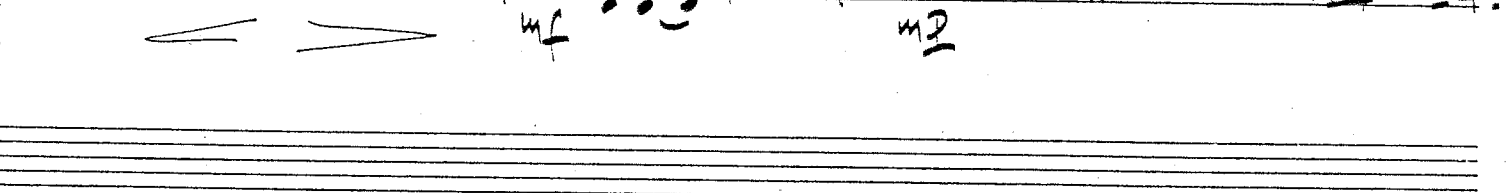
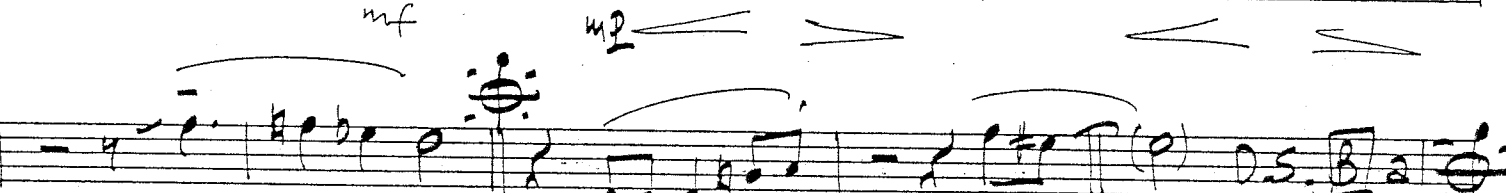
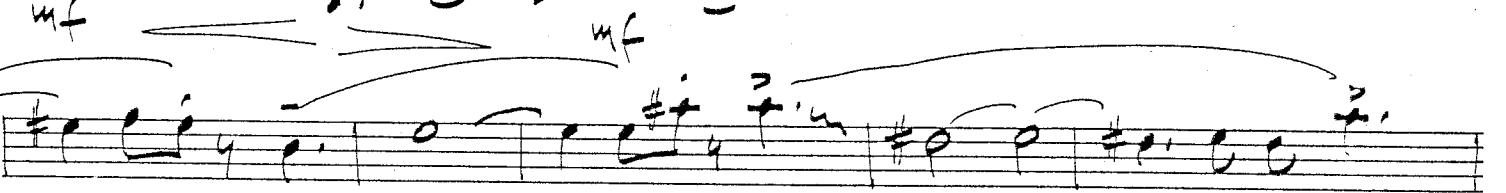

BARY

SANTA BABY

Jean YVES



A



TRUMPET I

SANTA BABY

mf

A

6

mf

mf

mf

mf

D.S. (B) e Coda

2

TRUMPET II

SANTA BABY

Musical staff with treble clef, key signature of one sharp (F#), and 4/4 time signature. The staff contains a melodic line of eighth notes with accents and slurs. A dynamic marking of *mf* is present.

Musical staff starting with a boxed section marker 'A'. It contains a six-measure rest followed by a melodic line of eighth notes with accents and slurs. A dynamic marking of *mf* is present.

Musical staff starting with a boxed section marker 'B' and a dynamic marking of *f*. It contains a melodic line of eighth notes with accents and slurs. A dynamic marking of *mf* is present.

Musical staff containing a six-measure rest, a key signature change to one flat (F), and a melodic line of eighth notes with accents and slurs. A dynamic marking of *mf* is present.

Musical staff starting with a boxed section marker 'B' and the instruction 'D.S. al Coda'. It contains a melodic line of eighth notes with a wavy line at the end.

Musical staff starting with a boxed section marker 'B' and a dynamic marking of *f*. It contains a melodic line of eighth notes with accents and slurs. A dynamic marking of *mf* is present.

TRUMPET

TRUMPET III

SANTA BABY

Musical staff with treble clef, key signature of two sharps (F# and C#), and 4/4 time signature. It contains a melodic line with various notes, rests, and accents. A 'mf' dynamic marking is present.

Musical staff with a box labeled 'A' at the beginning. It contains a melodic line with a '6' above it and a 'mf' dynamic marking.

Musical staff with a box labeled 'B' and a '7' below it. It contains a melodic line with a '1' above it and a 'mf' dynamic marking.

Musical staff with a '6' above it and a 'mf' dynamic marking. It contains a melodic line with a treble clef and a key signature change to one sharp (F#).

Musical staff with 'D.S. (B)' and 'Coda' markings. It contains a melodic line with a treble clef and a key signature change to one sharp (F#).

Musical staff with a '2' above it and a 'mf' dynamic marking. It contains a melodic line with a treble clef and a key signature change to one sharp (F#).

TRUMPET IV

SANTA BABY

TROMBONE I

SANTA BABY

First staff of music in bass clef, 4/4 time. It contains a melodic line with various ornaments and slurs. A dynamic marking of *mf* is present below the staff.

Second staff of music, starting with a boxed section labeled 'A'. It features a long rest followed by a melodic phrase with slurs and accents. A dynamic marking of *mf* is present below the staff.

Third staff of music, continuing the melodic line with slurs and accents. A boxed section labeled 'B' is present. A dynamic marking of *mf* is present below the staff.

Fourth staff of music, featuring a melodic phrase with slurs and accents. A dynamic marking of *mf* is present below the staff.

Fifth staff of music, starting with a melodic phrase and followed by the instruction "D.S. (B) a Coda" with a wavy line indicating the end of the section. A dynamic marking of *mf* is present below the staff.

Sixth staff of music, mostly empty with some faint markings.

Seventh staff of music, starting with a treble clef and a key signature of one flat. It contains a melodic phrase with slurs and accents. A dynamic marking of *mf* is present below the staff.

Eighth staff of music, mostly empty with some faint markings.

Ninth staff of music, mostly empty with some faint markings.

TROMBONE II

SANTA BABY

First staff of music in bass clef, 4/4 time. It contains a melodic line with various notes and rests, including a triplet of eighth notes.

mf

Second staff of music, starting with a boxed section labeled 'A'. It contains a melodic line with a fermata over a measure, followed by a triplet of eighth notes. A '6' is written above the staff.

Third staff of music, continuing the melodic line. It includes a boxed section labeled 'B' with a dynamic marking of **f**. A '7' is written below the staff.

Fourth staff of music, featuring a melodic line with a fermata. A '6' is written above the staff, and a dynamic marking of **mf** is present below.

Fifth staff of music, starting with a melodic line and a fermata. The text "D.S. a Coda" is written across the staff.

Sixth staff of music, starting with a boxed section labeled 'Coda'. It contains a melodic line with a fermata and a dynamic marking of **mf**. A '2' is written above the staff.

CODA

TROMBONE III

SANTA BABY

TROMBONE IV (Bass)

SANTA BABY

Musical staff with bass clef, 4/4 time signature, and a melodic line with accents and slurs.

mf

Musical staff with a box labeled 'A' and a sequence of notes with fingerings 1, 1, 1.

mf

Musical staff with a sequence of notes and a box labeled 'B' with a fermata.

mf

Musical staff with a sequence of notes and a fermata.

mf

mf

Musical staff with a sequence of notes and a Coda section.

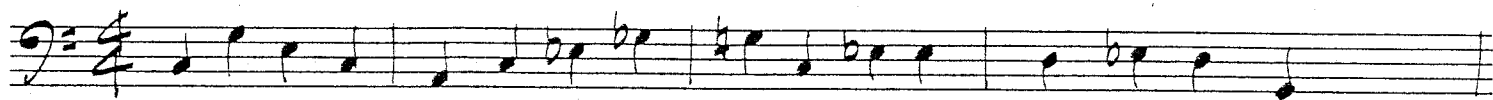
D.S. (B) a Coda

Musical staff with a sequence of notes and a fermata.

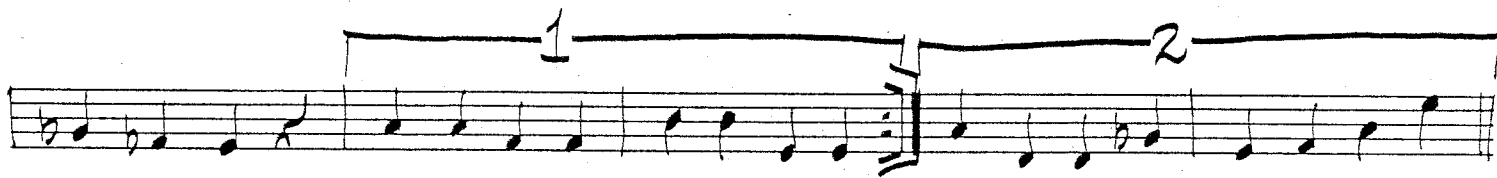
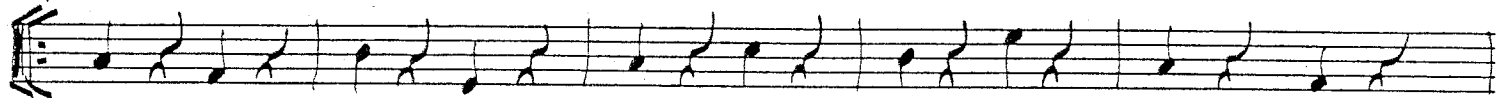
mf

BASS

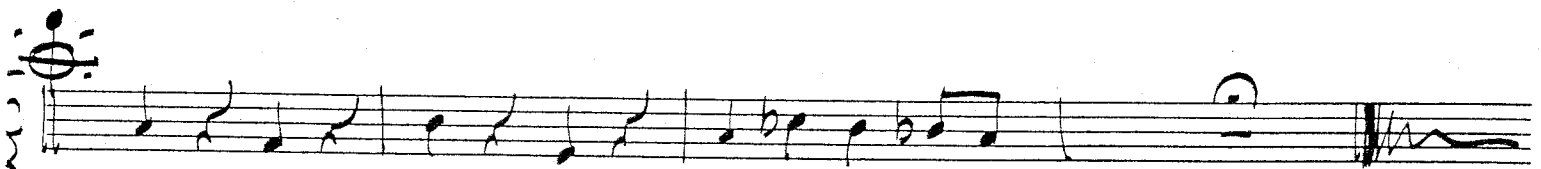
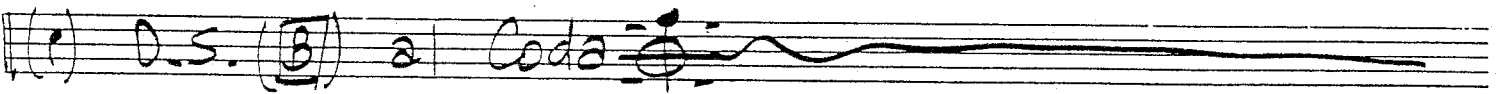
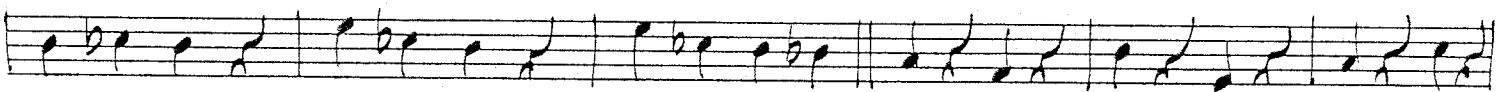
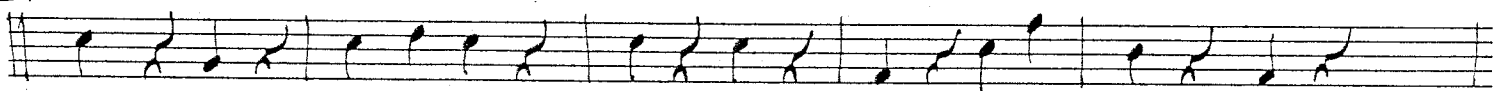
SANTA BABY



A



B



2

DRUMS -

- SANTA BABY -

Handwritten drum notation on a single staff in bass clef, 4/4 time. It features a sequence of notes with stems, including a triplet of eighth notes. A box labeled 'A' is placed above the notes in the fourth measure.

Handwritten drum notation on a single staff in bass clef, 4/4 time. It features a sequence of notes with stems, including a triplet of eighth notes. A box labeled 'A' is placed above the notes in the fourth measure.

Handwritten drum notation on a single staff in bass clef, 4/4 time. It features a sequence of notes with stems, including a triplet of eighth notes. A box labeled 'B' is placed above the notes in the fourth measure.

Handwritten drum notation on a single staff in bass clef, 4/4 time. It features a sequence of notes with stems, including a triplet of eighth notes. A box labeled 'B' is placed above the notes in the fourth measure.

Handwritten drum notation on a single staff in bass clef, 4/4 time. It features a sequence of notes with stems, including a triplet of eighth notes. A box labeled 'B' is placed above the notes in the fourth measure. The notation ends with "D.S. (B) a Coda" and a Coda symbol.

Handwritten drum notation on a single staff in bass clef, 4/4 time. It features a sequence of notes with stems, including a triplet of eighth notes. A box labeled 'B' is placed above the notes in the fourth measure.