

# One And Only

Words & Music by Adele Adkins, Daniel Wilson  
& Greg Wells

♩ = 52

F/C



C7



1. You've been on my

F



C



mind. I grow fon-der ev-'ry day, los-ing my-self in.  
(2.) mind? Do you hang on ev-'ry word I say? You lose your-self in.

Gm



Dm



C



time. Just think-ing of your face. God on - ly  
time at the men-tion of my name. Will I ev - er

F



C



knows—  
know—

why it's  
how it

tak - en me  
feels to hold you

so long— to  
close—

let my doubts—  
and have you—



Gm



D



Csus<sup>4</sup>



C



go.—  
tell me

Oh, you're the on - ly one that I want.—  
which - ev - er road I choose you'll go.—

I don't know



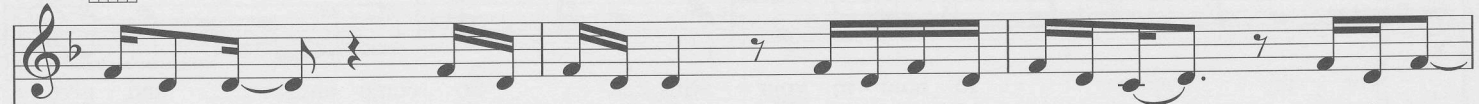
B<sup>b</sup>



C



Dm



why I'm scared,—

I've been here be-fore.

Ev-'ry feel-ing, ev-'ry word,—

I've i - ma -



E<sup>b</sup>



- gined it all.

You'll nev - er know

if

you nev - er try—

to



B $\flat$  Csus<sup>4</sup> C

for-give your past\_ and sim-ply be mine. I dare you to\_

F Dm

let me be\_ your, your one and on - ly. Prom-ise I'm\_

Am B $\flat$  Am Gm C

wor - thy to hold in your arms. So come on\_ and give\_

F Dm

me the chance\_ to prove I am the one who can\_ walk that

To Coda  $\oplus$  1.

2.

Am

B $\flat$

Am

Gm

C

Gm

C



mile—

un - til the end starts.

2. Have I been on your

E $\flat$ sus $^2$

B $\flat$ /E $\flat$

B $\flat$ sus $^2$ /E $\flat$

B $\flat$

Gm $^7$  $\sharp^5$

Gm $^7$

B $\flat$ sus $^2$ /E $\flat$

Gm $^7$



B $\flat$ sus $^4$ /F

B $\flat$ /F

B $\flat$ sus $^2$ /F

B $\flat$ /F

B $\flat$ sus $^4$

B $\flat$

B $\flat$ sus $^2$

B $\flat$



E $\flat$ sus $^2$

B $\flat$ /E $\flat$

B $\flat$ sus $^2$ /E $\flat$

B $\flat$

Gm $^7$  $\sharp^5$

Gm $^7$

B $\flat$ sus $^2$ /E $\flat$

Gm $^7$



I know—

it ain't eas - y,—

giv - ing up— your heart.—

8 $\flat$

B<sup>b</sup>sus<sup>4</sup>/F



B<sup>b</sup>/F



B<sup>b</sup>sus<sup>2</sup>/F



B<sup>b</sup>/F



B<sup>b</sup>sus<sup>4</sup>



B<sup>b</sup>



I know it ain't eas - y, giv - ing up your

B<sup>b</sup>sus<sup>2</sup>



B<sup>b</sup>



E<sup>b</sup>sus<sup>2</sup>



B<sup>b</sup>/E<sup>b</sup>



B<sup>b</sup>sus<sup>2</sup>/E<sup>b</sup>



B<sup>b</sup>



heart. No - bod - y's per - fect. Trust me, I've

(cont. sim.)

Gm<sup>7</sup>#<sup>5</sup>



Gm<sup>7</sup>



B<sup>b</sup>sus<sup>2</sup>/E<sup>b</sup>



Gm<sup>7</sup>



B<sup>b</sup>sus<sup>4</sup>/F



B<sup>b</sup>/F



learned it. No - bod - y's per - fect.

B<sup>b</sup>sus<sup>2</sup>/F



B<sup>b</sup>/F



1. B<sup>b</sup>sus<sup>4</sup>



B<sup>b</sup>



B<sup>b</sup>sus<sup>2</sup>



B<sup>b</sup>



Trust me I've learned it. No - bod - y's

2.

Gm7#5



Gm7



C



*D.S. al Coda*

Giv - ing up \_\_\_\_\_ your heart. So I dare you to \_\_\_\_\_  
 learned it. \_\_\_\_\_

*Coda*

Gm



C



F



Come on \_\_\_\_\_ and give \_\_\_\_\_ me the chance \_\_\_\_\_ to prove that I'm the

Dm



Am



one who can \_\_\_\_\_ walk that mile \_\_\_\_\_

Bb



Am



Gm



C



F



un - til the end \_\_\_\_\_ starts \_\_\_\_\_