

LET'S GO CRAZY

- PRINCE

INTRO 1

ORGAN:

Gb/Db

SPOKEN: DEARLY BELOVED WE R GATHERED HERE TODAY THAW- LIFE ELECTRIC WARD LIFE-FOREVER AND THAT'S-
- THIS THING CALLED - IT MEANS - A MIGHTY LONG TIME

BUT I'M HERE 2 TELL U THERE'S THE AFTERWORLD A WORLD OF- HAPPINESS- SEE THE SUN DAY OR NIGHT SO WHEN U- SHAWK IN BEVERLY HILLS-
SOMETHING ELSE - NEVER ENDING - U CAN ALWAYS - CALL UP THAT - U KNOW THE ONE DOCTOR

INTRO 2

Gb/Db (DRUMS BEGIN)

Gb sus 2 / Db

EVERYTHING 'LL BE ALRIGHT INSTEAD OF ASKIN' HIM HOW MUCH OF YOUR TIME IS LEFT ASK HIM HOW

MUCH OF YOUR MIND BABY 'COS IN THIS LIFE THINGS ARE MUCH HARDER THAN IN THE

AFTERWORLD IN THIS LIFE YOU'RE ON YOUR OWN

INTRO 3

Gb (GUITAR BEGINS)
(ORGAN OUT)

AND IF THE ELEVATORS TRIES 2 BRING U DOWN

GO CRAZY PUNCH THE HIGHEST FLOOR

VERSE

(RHYTHM SECTION BEGINS)

IF U DONT LIKE ALL EXCITED THE WORLD YOU'RE LIVIN' IN BUT WE DONT KNOW WHY

TAKE A LOOK AROUND U MAY BE IT'S 'COS AT LEAST U GOT FRIENDS U SEE I AND
WE'RE ALL GONNA DIE

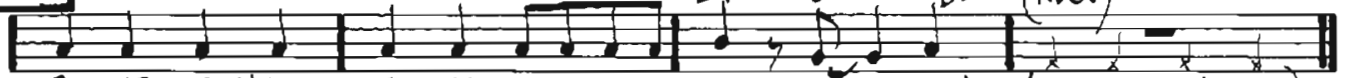
CALLED MY OLD LADY WHEN WE DO 4 A FRIENDLY WORD SHE JUST U
WHAT'S IT ALL 4



PICKED UP THE PHONE BETTER LIVE NOW DROPPED IT ON THE FLOOR AH AH WAS THAT I HEARD TELL ME BE-FORE THE GRM REAPER COME KNOCKIN' ON YOUR DOOR TELL ME

PRE-CH

Db Ebm Cb Db (N.C.)



R WE GONNA LET THE ELEVATOR BRING US DOWN (OH NO LET'S GO)

CHORUS



LET'S GO CRA-ZY LET'S GET NUTS LET'S



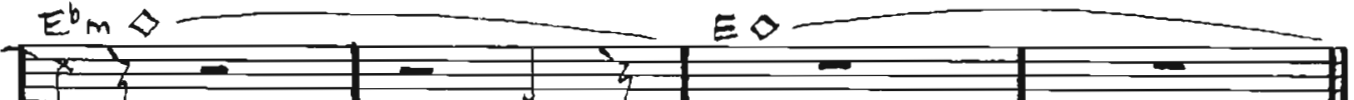
LOOK 4 THE PURPLE BA-NA-NA TILL THEY PUT US IN THE TRUCK LET'S GO



BRIDGE



COME ON BA-BY LET'S GET NUTS



YEAH

16 BARS SOLD (VERSE) - PRE-CH - DOUBLE CHORUS - 16 BARS "1ST ENDING" - GUITAR FILL - "BLUES ENDING"!

RHYTHM (EXCEPT PRE-CH, 1ST ENDING AND BRIDGE!)

GUIT.

SYNTH

BASS Gb E Gb E

DRUMS (x) SIMPLE