



7. And Then She Wept

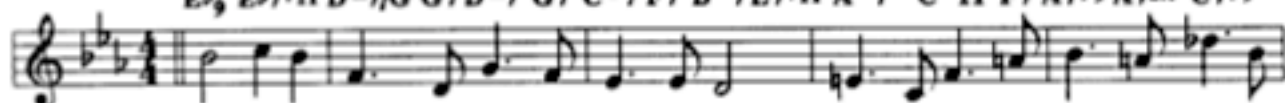


$\text{♩} = 50$

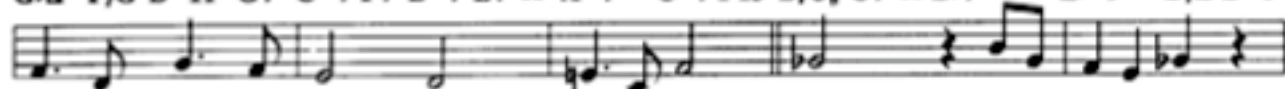
By Randy Brecker

Play 3 Choruses

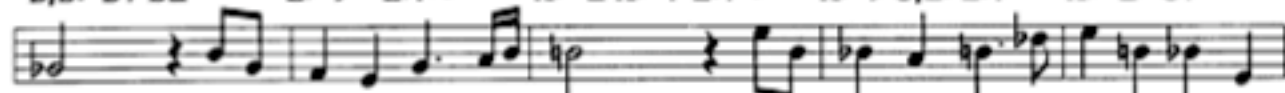
$E\flat_6$ $E\flat 7+11$ D-7/G G7 D-7 G7 C-7 F7 B-7 E7+11 A-7 C-11 F7 A7 $\flat 9$ A7+11 C7 $\flat 9$



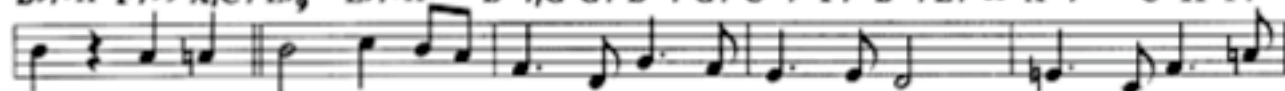
G \flat A F/G D-11 G7 C-7 F7 B-7 E7+11 A-7 C-7 F13 B/C \sharp C7+11 B $\flat 7+11$ E \flat -9 D/E B-6



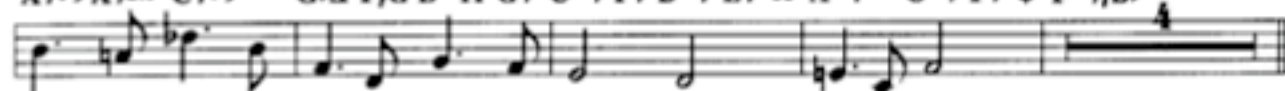
B/D \flat D7 BA E \flat -9 E $\flat 7\flat 9$ A \flat -A A \flat -7 E $\flat 7\flat 9$ A \flat -9 G/E \flat E $\flat 7$ A \flat -A G7+11



D $\flat 7+11$ F7 $\flat 9$ A/C7 E \flat_6 E $\flat 7+11$ D-7/G G7 D-7 G7 C-7 F7 B-7 E7+11 A-7 C-11 F7

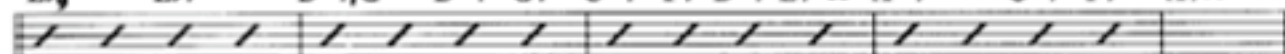


A7 $\flat 9$ A7+11 C7 $\flat 9$ G \flat A F/G D-11 G7 C-7 F7 B-7 E7+11 A-7 C-7 F7 ⊕ F-7/B \flat

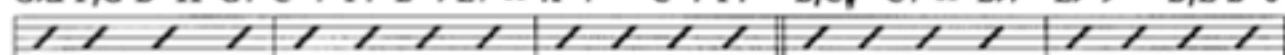


SOLOS

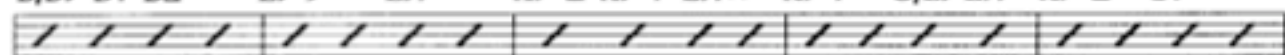
$E\flat_6$ E $\flat 7$ D-7/G D-7 G7 C-7 F7 B-7 E7+11 A-7 C-7 F7 A7 $\flat 9$



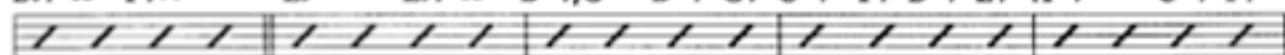
G \flat A F/G D-11 G7 C-7 F7 B-7 E7+11 A-7 C-7 F7 B/C \sharp C7+11 B $\flat 7$ E \flat -9 D/E B-6



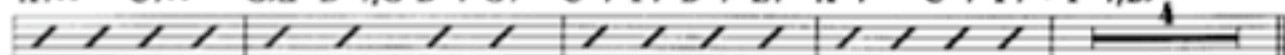
B/D \flat D7 BA E \flat -9 E $\flat 7+11$ A \flat -A A \flat -7 E $\flat 7\flat 9$ A \flat -7 G/E \flat E $\flat 7$ A \flat -A G7+11



D $\flat 7+11$ F7 $\flat 9$ E \flat E $\flat 7+11$ D-7/G D-7 G7 C-7 F7 B-7 E7 A-7 C-7 F7



A7 $\flat 9$ C7 $\flat 9$ G \flat A D-7/G D-7 G7 C-7 F7 B-7 E7 A-7 C-7 F7 ⊕ F-7/B \flat



⊕ B $\flat 9$ +11



Copyright © 1984 Bowers Music (BMI)
International Copyright Secured All Rights Reserved