

From: "The Van Halen Keyboard Songbook"

Love Walks In

by

SAMMY HAGAR, MICHAEL ANTHONY,
EDWARD VAN HALEN and ALEX VAN HALEN

Published Under License From

Alfred Publishing Co., Inc.

© 1986 VAN HALEN PUBLISHING, LLC and CABO WABO MUSIC
All Rights Administered by WB MUSIC CORP.
All Rights Reserved

Authorized for use by *Cassandra Halyshyn*

NOTICE: Purchasers of this musical file are entitled to use it for their personal enjoyment and musical fulfillment. However, any duplication, adaptation, arranging and/or transmission of this copyrighted music requires the written consent of the copyright owner(s) and of Alfred Publishing Co., Inc.. Unauthorized uses are infringements of the copyright laws of the United States and other countries and may subject the user to civil and/or criminal penalties.

 <http://www.musicnotes.com>

LOVE WALKS IN

Words and Music by
SAMMY HAGAR, EDWARD VAN HALEN,
ALEX VAN HALEN and MICHAEL ANTHONY

Moderate rock ballad ♩ = 88

C C/E Am7 F(9) G

mf

C C/E Am7 F(9) G

F F/A Am Dm7 Bb(9) C

F F/A Am Dm7 Bbmaj7 C

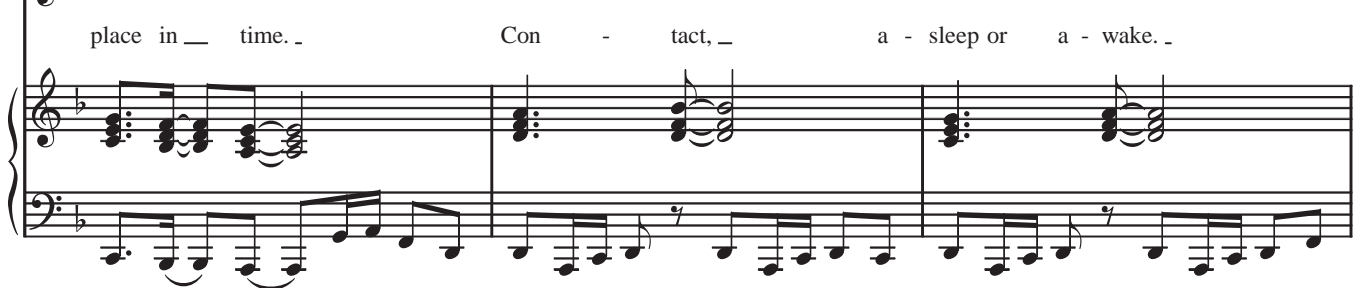
2 *Verse:*



1. Con - tact _ is all it takes _ to change your life, to lose your
 2.3. See additional lyrics



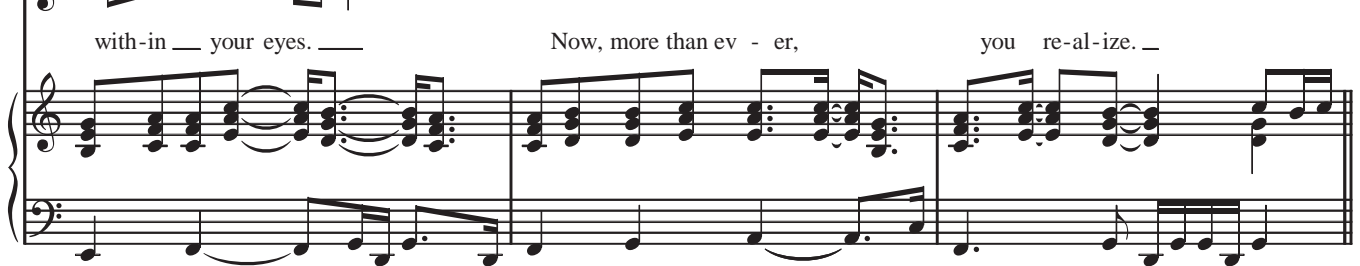
place in _ time. _ Con - tact, _ a - sleep or a - wake. _



Com - ing a - round, _ you may wake up to _ find _ ques - tions deep _



with-in _ your eyes. _ Now, more than ev - er, you re-al-ize. _



Chorus:



And then you sense a ___ change, _ noth-ing feels the _ same. ___ All your dreams are _ strange. _



To Coda ♪

___ Love _ comes walk - ing _ in. Some kind of al - i - en ___ waits for the o - pen - ing, _



___ then sim-ply pulls a ___ string, _ ___ then sim-ply pulls a ___ string, _



___ love _ comes walk - ing _ in.
(Inst. solo ad lib....)

4

Dm

B \flat (9)

C

F

Musical notation for the first system, measures 4-7. The guitar part features chords Dm, B \flat (9), C, and F. The piano accompaniment consists of a steady eighth-note bass line in the left hand and a melodic line in the right hand.

Am

Dm

B \flat (9)

G

Musical notation for the second system, measures 8-11. The guitar part features chords Am, Dm, B \flat (9), and G. The piano accompaniment continues with the same rhythmic pattern.

C

C/E

Am7

F

G

Musical notation for the third system, measures 12-15. The guitar part features chords C, C/E, Am7, F, and G. The piano accompaniment includes a fermata over the final measure of this system.

D.S. % al Coda

C

C/E

Am7

F

G

Musical notation for the fourth system, measures 16-19. The guitar part features chords C, C/E, Am7, F, and G. The piano accompaniment includes a fermata over the final measure of this system.

...end solo

Coda
Am7

F

G

Gsus

Musical notation for the Coda section, measures 20-23. The guitar part features chords Am7, F, G, and Gsus. The piano accompaniment is sparse, with a few chords in the right hand and a single note in the left hand. The lyrics are: "sim - ply pulls a string and love comes walk - ing in."

F F/A F

(Lead vocal ad lib....)

Bb(9) C F F/A

Love _comes walk - ing _ in. ____

1. 2.

Dm7 Bb(9) C Bb(9) C F

Love _comes walk - ing _ in. .

rit.

Verse 2:
 Another world, some other time,
 You lay your sanity on the line.
 Familiar faces, familiar sights.
 Reach back, remember with all your might.
 Ooh, there she stands in a silken gown,
 Silver lights shining down.
 (To Chorus:)

Verse 3:
 Sleep and dream, that's all I crave.
 I travel far across the Milky Way.
 To my master, I become a slave,
 Till we meet again some other day,
 Where silence speaks as loud as war,
 Earth returns to what it was before.
 (To Chorus:)