

# Drum Play Along System

## Popular Songs Expansion Pack

Featuring:

**Metallica**

**U2**

**Guns And Roses**

**Michael Jackson**

**Maroon 5**

**Bryan Adams**

**Green Day**

**ACDC**

**Nirvana**

**And More...**



# *Play Along*

## *Table Of Contents*

### **Popular Songs Expansion Pack**

- 5 - ACDC - Back In Black**
- 8 - ACDC - You Shook Me All Night Long**
- 10 - Bryan Adams - Summer Of '69**
- 12 - Green Day - Basket Case**
- 14 - Guns N Roses - Sweet Child Of Mine**
- 17 - Maroon 5 - This Love**
- 19 - Metallica - Enter Sandman**
- 22 - Michael Jackson - Beat It**
- 23 - Michael Jackson - Billie Jean**
- 24 - Nirvana - Come As You Are**
- 26 - Nirvana - Smells Like Teen Spirit**
- 28 - Shania Twain - Man! I Feel Like A Woman**
- 29 - U2 - Beautiful Day**
- 31 - U2 - With Or Without You**



# ACDC - "Back In Black"

Back In Black is a very easy song to play. It follows the same 4/4 basic rock beat throughout the entire song. Each section of this song follows a pattern. The verse and intro follow this 4 bar pattern.

Verse 1



This is the 8 bar pattern for the chorus. Remember to play this with open hi hats.

Chorus 1



Same idea as the first verse.

Verse 2

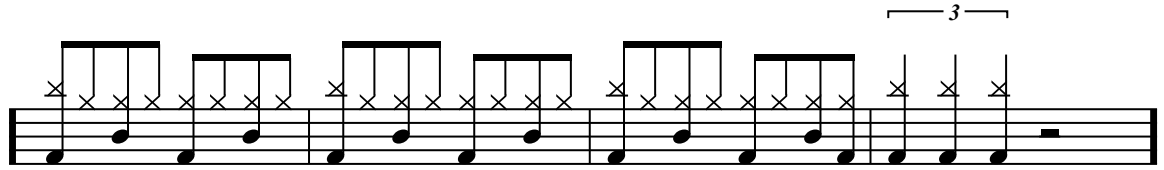


Same idea as the fist chorus

Chorus 2



Chorus continued...



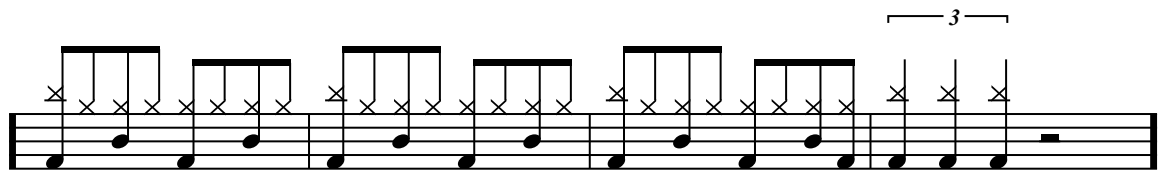
The solo has a pattern a little bit different to the chorus. Keep the hi hats open and play this.

Solo



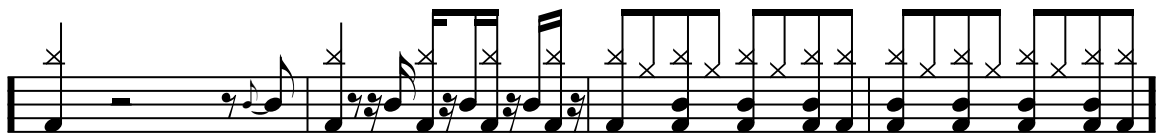
Play the chorus pattern again right after the solo.

Chorus 3



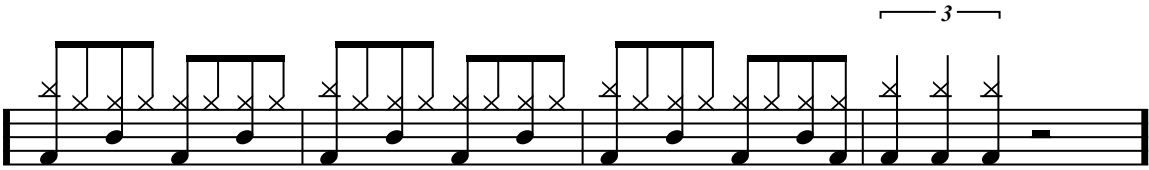
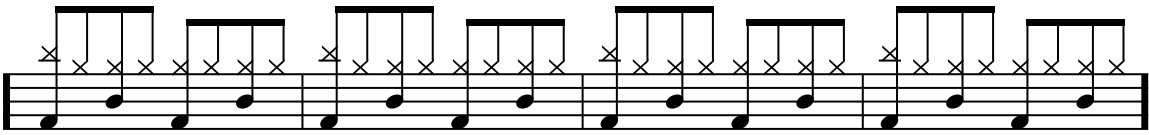
The bridge has a double time feel to it. There is a 2 bar intro notated below. Choke the first cymbal of this pattern. Open hi hats as well.

Bridge



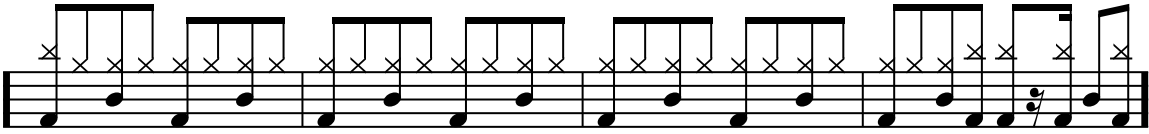
Play the chorus one more time.

Chorus 4



The outro plays until the song fades out. Play the same beat as the solo.

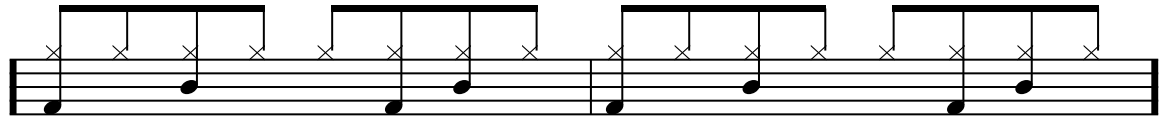
Outro



# ACDC - "You Shook Me All Night Long"

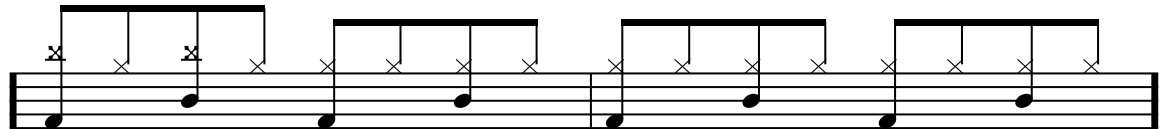
This song starts out with the basic beat that is played throughout most of this song. It is a straight forward rock beat.

Intro / Verse 1



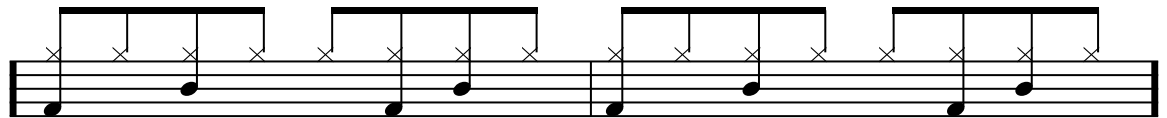
The chorus is played with open hi hats. Make sure you hit the crash on the first bar for the accent.

Chorus 1



Verse 2 is played identical to verse 1.

Verse 2



Chorus 2



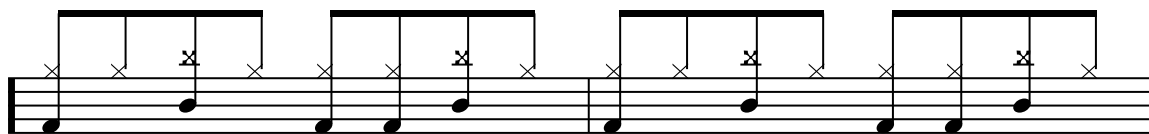
The solo has 2 parts to it. The first is played below. Watch the bass drum pattern as it changes to match the shots of the guitars.

Solo





This is the second part of the solo, just crash on the snare hits to build the energy.



The last chorus is played the same as the previous two. Watch for the ending as it is a sudden stop.

Chorus 3



# Bryan Adams - "Summer Of 69"

This song is very fun to play. Start out with a snare flam in the beginning, then come in with this beat below after a few bars or guitar intro.

Verse 1



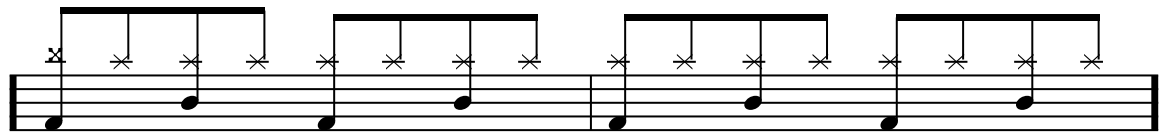
The pre chorus is similar to the first verse, however there is a few more bass drum shots.

Pre Chorus



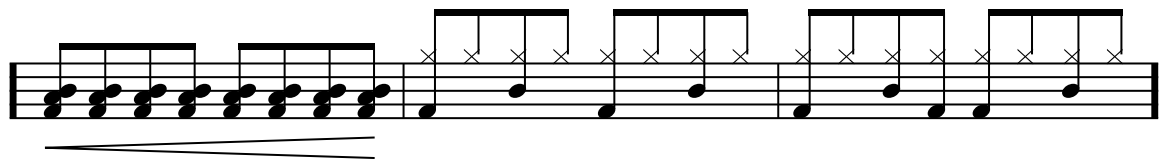
The chorus of this song is basically the main riff, there is not too many vocals. Play this basic beat on the ride cymbal to spice things up.

Chorus



There is a tom and snare crescendo into the second verse.

Verse 2



This pre chorus is played almost identical to the second verse.

Pre Chorus

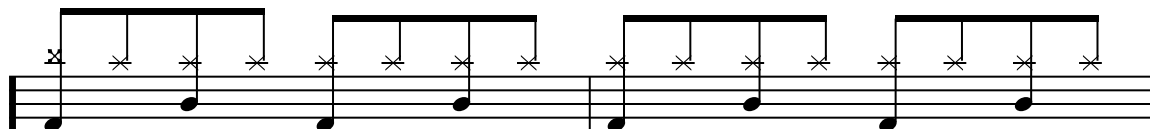


Chorus 2



The bridge is played similar to the chorus.

Bridge

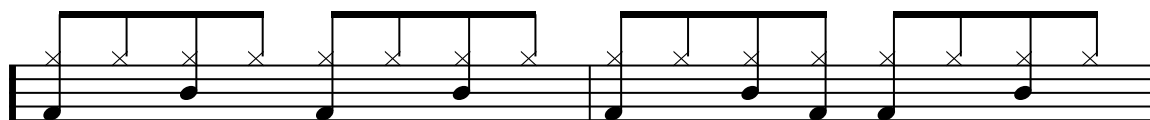


This is when the song breaks and hits the shot. I have notated the shots exactly, however you can experiment with the space to add in some extra fills.

Shots



Verse 3



The last chorus is played until the song fades out.

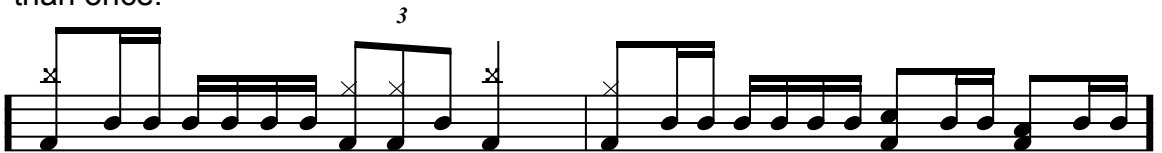
Chorus 3



# Green Day - "Basket Case"

Basket Case is a very upbeat song that requires a lot of energy. This song has a very prominent fill that is played a number of times in the song - including the beginning. Here is that fill notated below. Learn it, as you will encounter it more than once.

Intro Fill



The fill comes in around 35 seconds into the song. Take it right to the following beat. This is a short beat played for a few bars until everything cuts out.

Intro / Verse



The second part of the verse kicks in with a one bar fill. Experiment with different fills to spice up the song. The beat below is played throughout most of the song with semi opened hi hats.

Verse



During the chorus you will encounter that fill again notated at the top. Also, notice how the beat is played on the ride cymbal. Change this up half way through to the hi hats.

Chorus



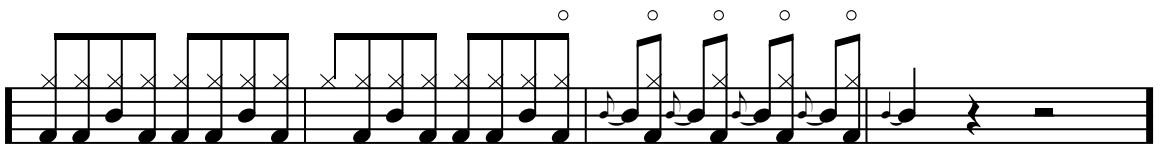
The bridge has a quarter note feel to it. Play this with open hi hats.

Bridge



This is the build up before the instrumental part. The fill he plays is notated below, and is played again during the outro.

Bridge Continued



The musical notation for 'Bridge Continued' shows a sequence of rhythmic patterns on a single staff. It begins with a series of eighth notes, each marked with an 'x' above it, indicating a specific drum hit. This is followed by a series of quarter notes, some marked with an 'o' above them. The notation concludes with a final quarter note and a whole rest.

The instrumental follows the same beat as the chorus.

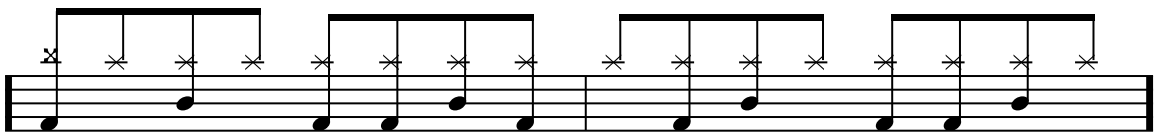
Instrumental



The musical notation for 'Instrumental' consists of a single staff with a series of eighth notes, each marked with an 'x' above it, representing a consistent drum pattern.

The last chorus and outro are all one big mix of the main beat. Switch from the hi hats to the ride cymbal often, and crash many cymbals on the shots.

Chorus / Outro

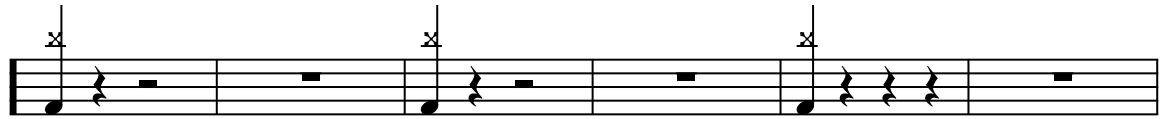


The musical notation for 'Chorus / Outro' shows a single staff with a series of eighth notes, each marked with an 'x' above it, representing a consistent drum pattern.

# Guns N Roses - "Sweet Child Of Mine"

This song starts with the main guitar melody. The drums come in 8 bars in with shots on the bass drum and the crash cymbal. It then builds up with a 2 bar crescendo and plays right into the main beat.

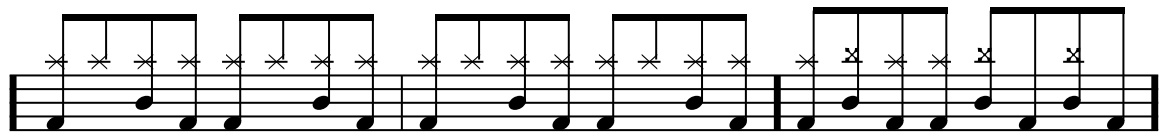
Intro



Here is the crescendo.



Repeat this beat until the first verse begins. The last bar is the fill played going into the verse.



This is the beat played during the verses. The last bar is the fill played inside the beat. Play it for transitions as well.

Verse 1



This is the chorus. Make sure you accent the guitar shots.

Chorus



This follows the same feel as the intro beat, however you want to accent the ride cymbal bell shots.

Instrumental



Verse 2



Chorus 2



The first solo follows a similar feel to the instrumental.

Solo 1



Chorus 3



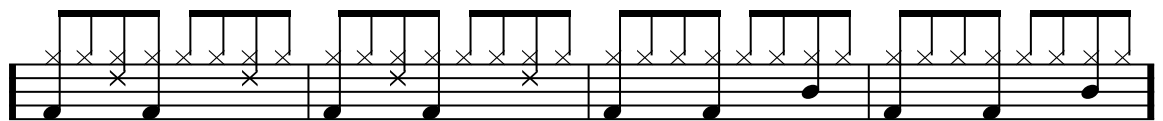
The second solo has a 2 bar build up, then goes into the following beat. This groove accents the rhythm guitar shots.

Solo 2



The bridge slowly builds up into another solo that is played until the end of the song. Start out by bringing the dynamics down by playing the beat on your cross stick. From there move to a half time snare beat.

Bridge / Outro



Double up your snare drum shot as the bridge progresses. Move right into the solo beat until the end.

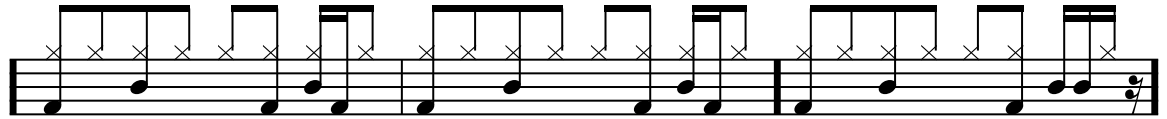




# Maroon 5 - "This Love"

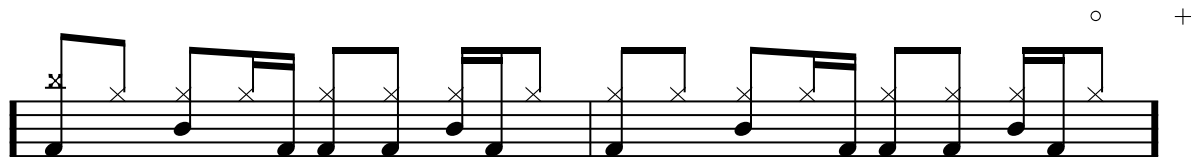
This song starts with a very groovy beat. It is played at a different dynamic from the rest of the song. Remember to make this whole song groove by sitting back on the beat a bit. Try and follow the piano shots.

Intro



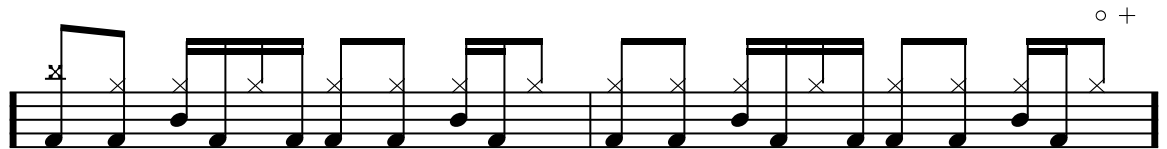
The last bar in the intro picks up into the first verse of the song. This is a similar beat, however it is played with more volume, and more bass drum notes.

Verse 1



The chorus follows the same groove, with just more bass drum and cymbals. Also, note that there is a tambourine in the background.

Chorus 1



The second verse is the same as the first. There is a short drum break, however you do not have to follow it since there is still a back beat played in the recording.

Verse 2

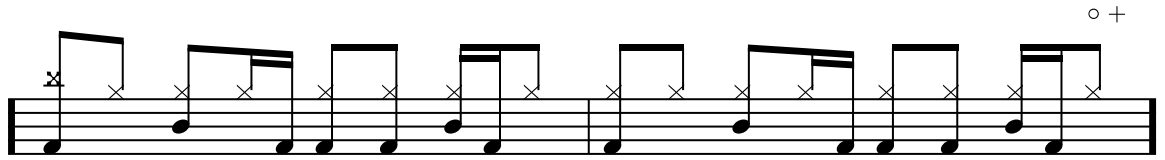


Same feel as the first chorus.

Chorus 2

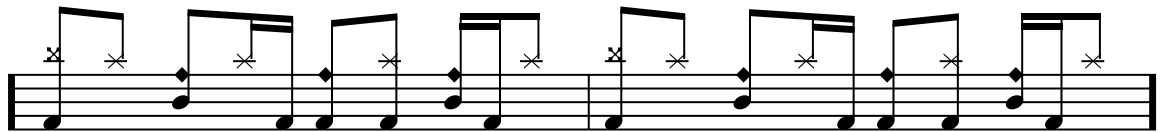


Play the main beat for a few bars before for the bridge.



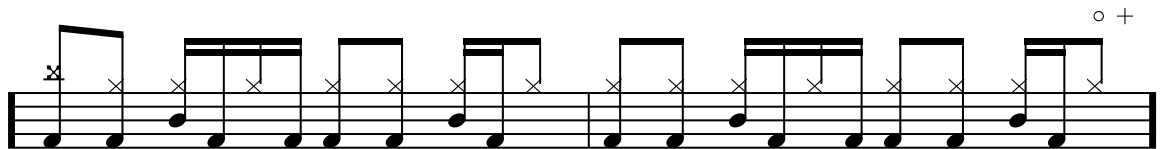
The bridge follows the same groove as the rest of the song; however you bring the beat to the ride cymbal. Make sure you hit the ride bell.

Bridge



Play the last chorus until the song fades out.

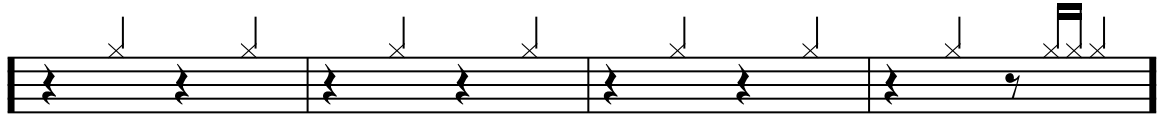
Chorus 3



# Metallica - "Enter Sandman"

This song is a very heavy driving song that always leaves the hi hats open. It starts out with a hi hat pattern shown below. Repeat this until the toms come in.

Guitar Intro



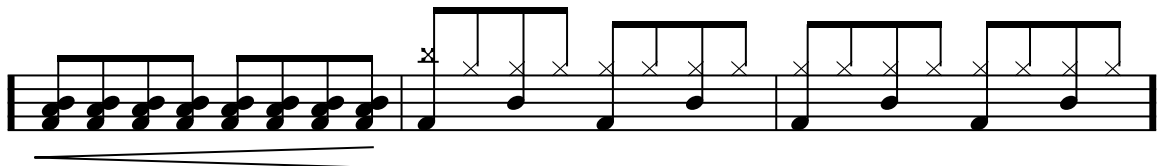
This is a very powerful section. Learn this beat below and try to hit the shots Lars hits with the guitars. This pattern is played a number of times, so make sure you learn the shots and the main feel.

Drum Intro



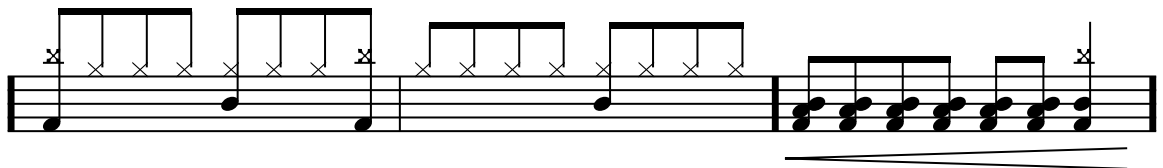
This section here is built up by a crescendo on your toms and snare. The main beat is a simple rock pattern. Play that pattern for the short intro and verse.

Verse



The pre chorus breaks into a half time feel. Remember to build that crescendo before the chorus.

Pre Chorus



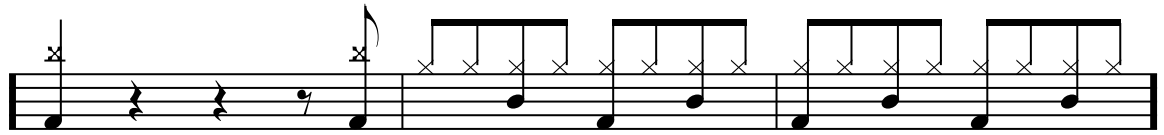
The chorus is a basic rock feel with a few extra shots on the bass drum. This is the main 4 bar pattern played, however keep an ear open for bass drum and cymbal shots.

Chorus



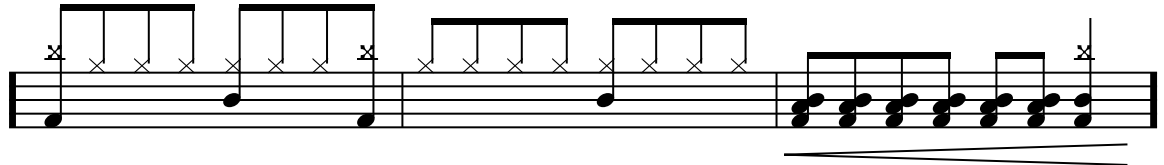
Before the second verse, you want to hit these 2 shots. The first cymbal hit is a choked cymbal. Then head right into the main riff and verse.

Verse 2



Same idea as the last pre chorus.

Pre Chorus



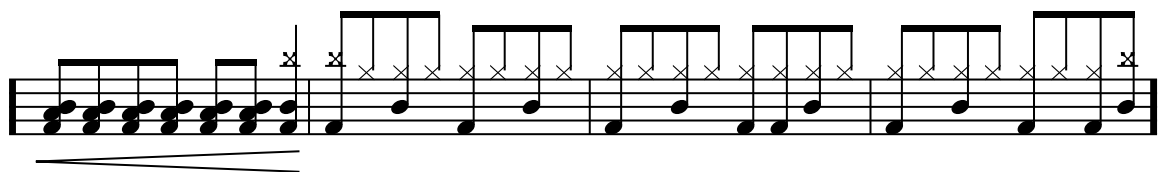
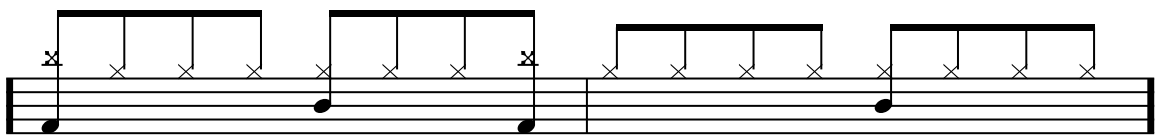
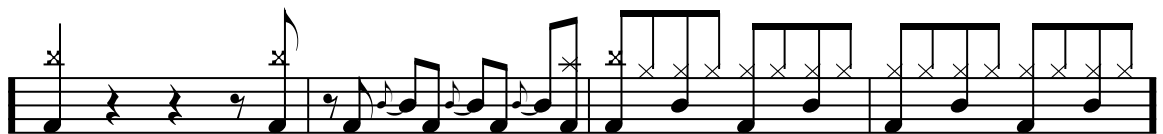
Same idea as the last chorus.

Chorus 2



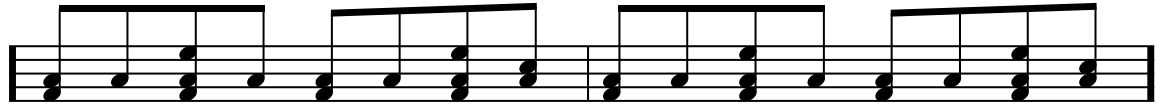
This is the shot and fill before the solo. Choke the first cymbal crash before the rests. Play the following 3 feels for the solo - it is very similar to the pre chorus and chorus.

Solo



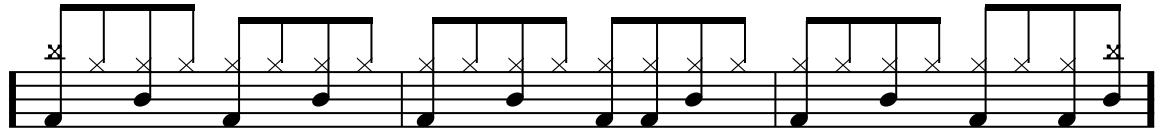
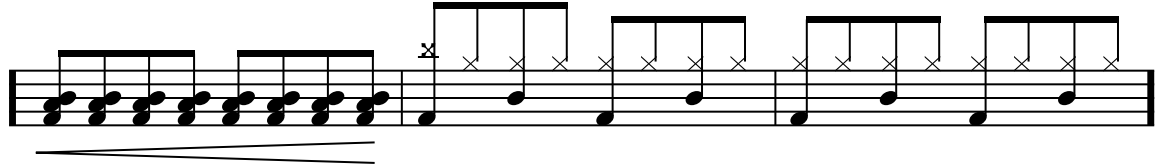
The bridge is similar to the beginning of the song. Play this tom feel below and remember to listen for the shots. This beat also is carried into the this verse.

Bridge / Verse 3



The last chorus does not have the half time pre chorus before it.

Chorus 3



The outro brings the feel back to the toms like the intro. Play this until the end.

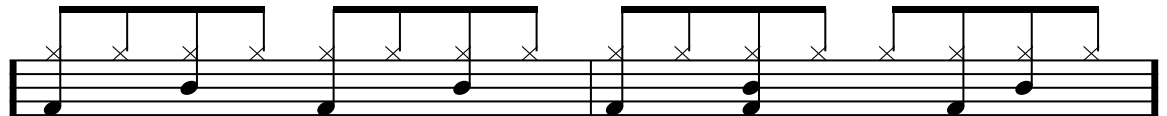
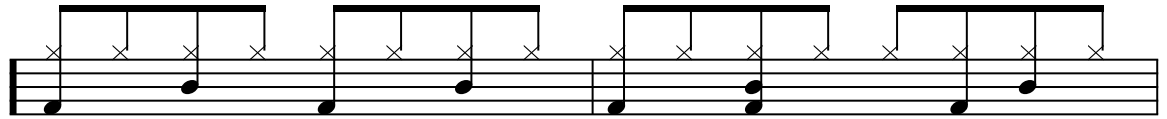
Outro



# Michael Jackson - "Beat It"

The song Beat It is a very fun song to play. The whole song is a drum loop - meaning the same beat is played over the whole song. Below is that beat notated out. Learn this and you learn the song.

Main Loop

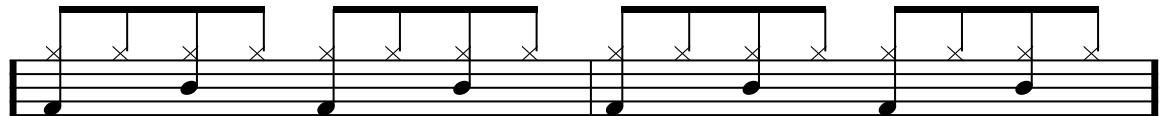
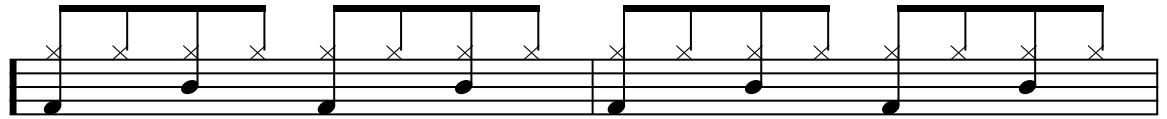


There is a hand clap in the recording played on the four count that you can accent if you wanted with a snare drum flam stroke. Remember to hit a crash cymbal when the verse changes into the chorus, and open the hi hats a little when the solo kicks in. Either than that this song is quite simple, just groove with this beat!

# Michael Jackson - "Billie Jean"

The song Billie Jean is a very fun song to play, and it is similar to Beat It. The whole song is a drum loop - meaning the same beat is played over the whole song. Below is that beat notated out. Learn this and you learn the song.

Main Loop

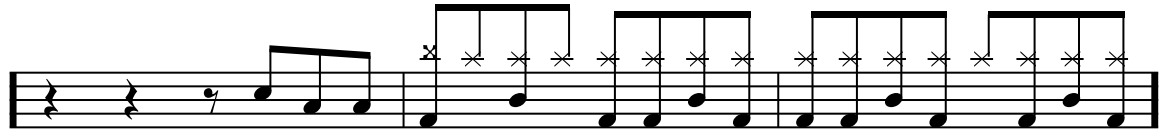


There are a few parts of this song where the hi hats are opened to bring in the chorus, and a crash is hit to accent certain parts; however the majority is all the same. Try to experiment with different fills in and out of the solos and choruses to spice things up a bit. Remember to groove with the main bass riff.

# Nirvana - "Come As You Are"

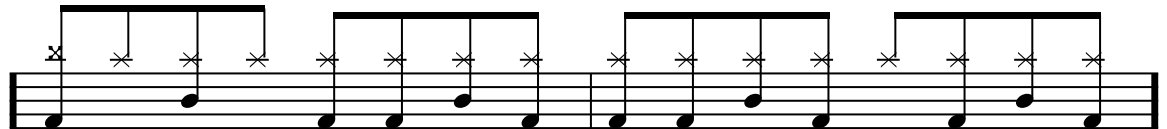
This song starts with the main riff on the guitar. A basic tom fill brings in the drums.

Intro



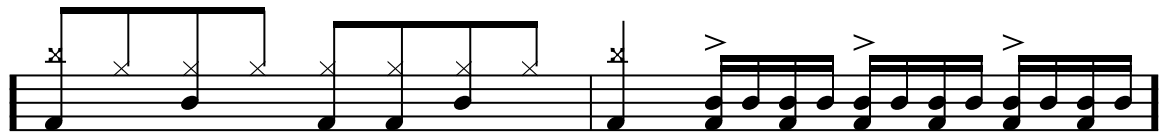
The verse is fairly standard. Make sure you really follow the main riff for the song with your bass drum.

Verse 1

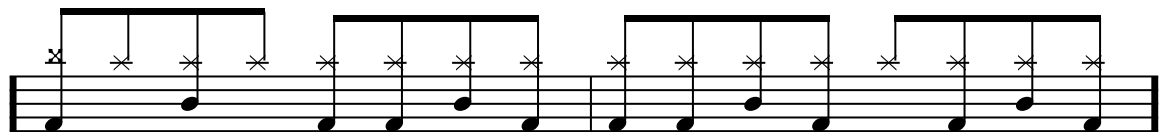


Play the pre chorus 4 times. Make sure you accent that snare roll. Play with an open hi hat feel.

Pre Chorus 1

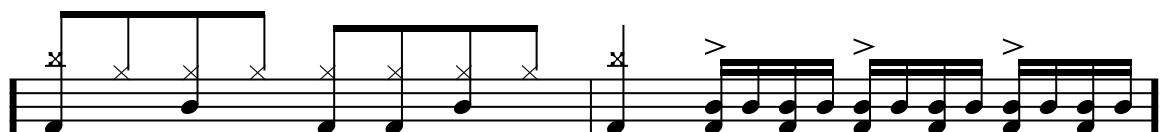


Verse 2



Same idea as the first pre chorus. Play with an open hi hat feel.

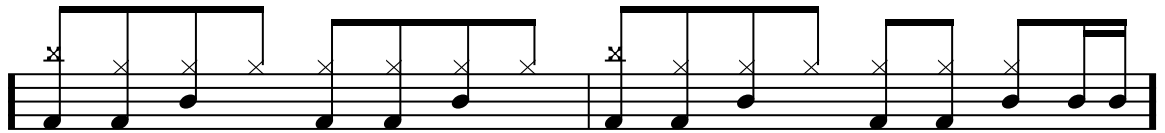
Pre Chorus 2





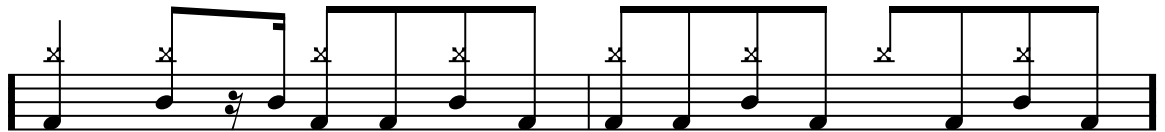
This is the chorus of the song so play it with energy and an open hi hat feel.

Chorus 1

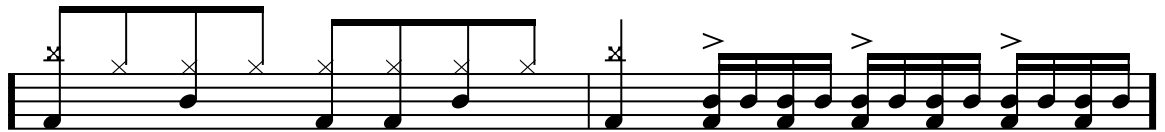


For the solo, play a similar beat as the verses, however rock it out a bit more by moving to the crash cymbal.

Solo

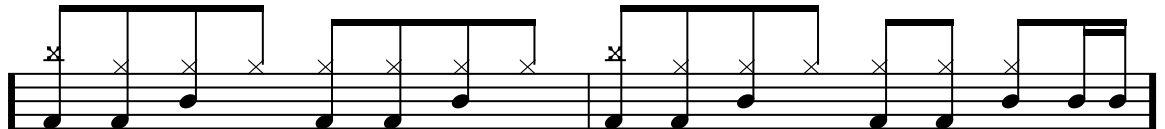


Pre Chorus 3



This is the last chorus and is played similar to the first - with an open hi hat feel.

Chorus 3



For the outro, play the main riff with a heavy feel - similar to the solo.

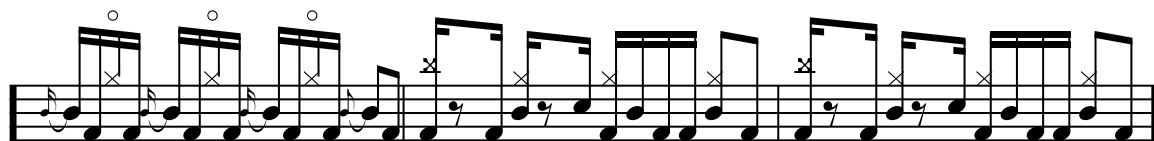
Outro



# Nirvana - "Smells Like Teen Spirit"

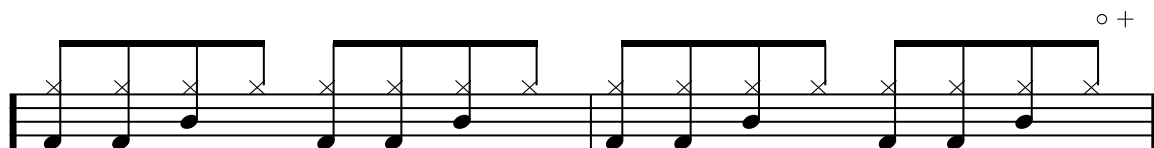
This song starts with a guitar intro, and moves right into a powerful drum fill. I have notated the intro fill and beat below. Remember to keep your hi hats open.

Intro



The verse is a very simple eight note beat. As the verse progresses into the pre chorus, open up the hi hats and build with a crescendo.

Verse 1 & Pre Chorus



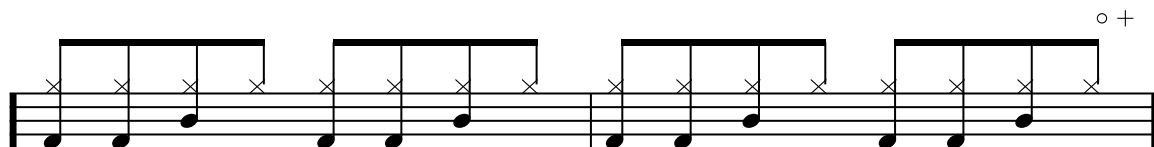
There is a powerful fill played right before the chorus. It is a 16th note fill notated below. The chorus follows the same feel as the intro with open hi hats.

Chorus 1



The second verse is the same as the first. Again, build up the pre chorus with open hi hats and a crescendo.

Verse 2 & Pre Chorus



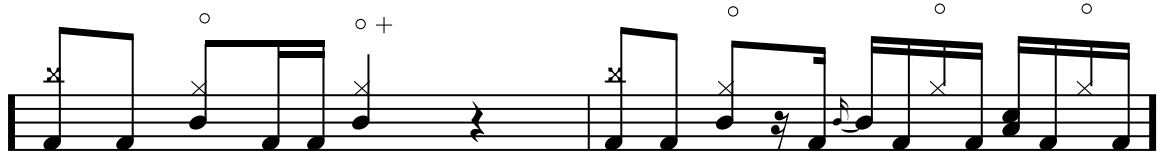
Same idea as the first chorus.

Chorus 2

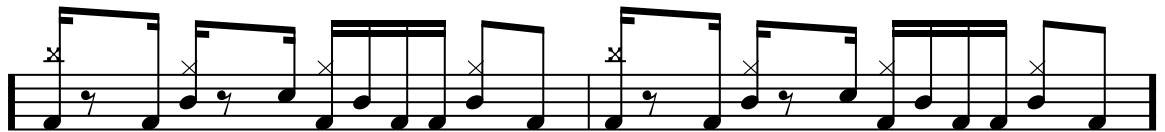


Play this broken beat twice before going back into the solo beat.

Bridge / Solo

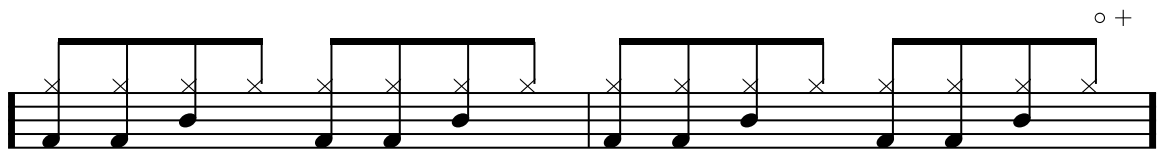


For the solo, play the same beat as you did for the chorus.



Last verse is similar to the previous 2.

Verse 3



The last chorus has the same intro fill, and is played until the end. The feel will change into a double time snare beat half way through.

Chorus 3



This is the second part of the final chorus.



# Shania Twain - "Man! I Feel Like a Woman"

This is a very simple country song that does not focus too much on the beat. Meaning there is a basic quarter note feel for the whole song. All you need to do is learn this and listen for the breaks to cut out.

Intro / Verse



The song starts out with a crash and snare and then goes right into the main feel. Keep your hi hats closed but not tight to get a washy sound from them.

Chorus



For an added challenge, try to play this shuffle beat below instead. This will give the song a more swing feel to it and really make it groove.

Alternate Groove



Once you familiarize yourself with this song you will realize there is not much to it. As long as you can develop the grooves above you should have no problem playing the song. Just listen for the breaks and shots!

# U2 - "Beautiful Day"

Beautiful Day has an underlying pulse on the bass drum. Most of this song you will follow that 3 note pulse. There is an eight note pick for the intro of the song.

Intro



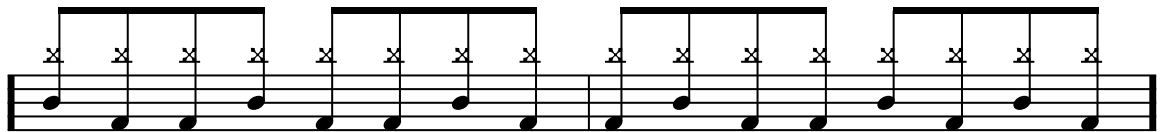
The first verse follows the main pulse. Do not move to your hi hats for this verse, instead accent your snare hits with a tambourine.

Verse 1



The chorus is really energetic, with a driving feel.

Chorus 1



In the second verse, move to the hi hats to give it a more complete sound.

Verse 2



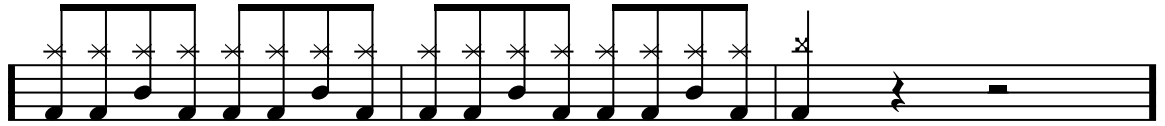
This is the same as the first, however there is a second part to the chorus in which the beat does not change.

Chorus 2



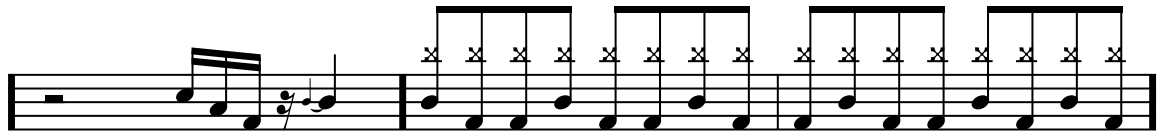
Play this beat right after the second chorus. After a few repetitions the beat will cut out. From there build it up again to match that pulse.

Bridge



Before the last chorus there is a break where there is just vocals. Below is the fill played into the beat when the music kicks in. Play this until the end of the song.

Chorus 3



# U2 - "With Or Without You"

This song actually has only 3 parts played in it. The whole song is based off of the tom groove notated below. Play the first feel for about a minute and a half as you slowly build the volume with a slow crescendo.

First Feel



The second feel comes in after the first chorus. It is similar to the first feel, only you accent the snare drum, and play a few more toms. Remember to hit the open hi hat at the end of the pattern.

Second Feel



The third feel is a bit bigger than the previous two. This is played for the bridge, and has a tambourine in the background. Play more toms, and a bit louder.

Third Feel



For the ending of this song, bring the volume and groove back to the first, and slowly build it from there as the song dynamics change.

Ending

