

HO CAPITO CHE TI AMO

Gm7 A° D7^{b9} F#° Gm7 Gm6 G7^{b9}

Handwritten guitar chord diagrams for Gm7, A°, D7^{b9}, F#°, Gm7, Gm6, and G7^{b9}. Each diagram shows the fretboard with dots indicating finger positions. Roman numerals V and VI are written below the diagrams for A°, D7^{b9}, Gm6, and G7^{b9}.

Handwritten musical notation for the first line of the song, featuring a treble clef, a key signature of one flat (B-flat), and a 3/4 time signature. The melody consists of eighth and quarter notes with slurs and accents. Triplet markings (3) are present under the first, fourth, and seventh measures.

Cm7 F7^{b9} Bb7M D7 Gm7

Handwritten guitar chord diagrams for Cm7, F7^{b9}, Bb7M, D7, and Gm7. Roman numerals III, VIII, VI, and V are written below the diagrams for Cm7, F7^{b9}, Bb7M, and D7 respectively.

Handwritten musical notation for the second line of the song, continuing the melody with slurs, accents, and triplet markings (3) under the first, fourth, and seventh measures.

A° D7^{b9} F#° Gm7 Gm6 G7^{b9}

Handwritten guitar chord diagrams for A°, D7^{b9}, F#°, Gm7, Gm6, and G7^{b9}. Roman numerals V and VI are written below the diagrams for A° and D7^{b9} respectively.

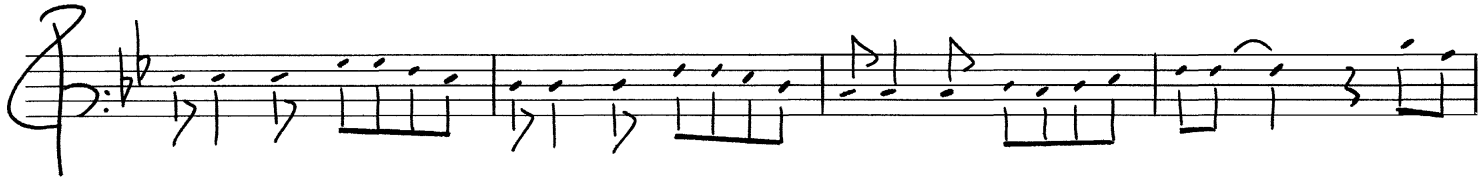
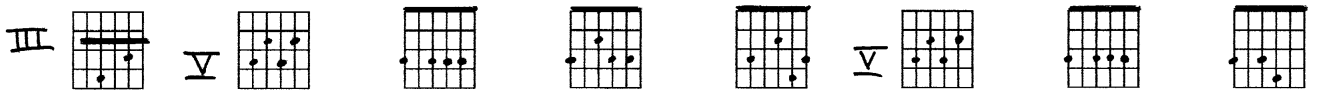
Handwritten musical notation for the third line of the song, continuing the melody with slurs, accents, and triplet markings (3) under the first, fourth, and seventh measures.

Cm7 F7^{b9} Bb7M Bb6

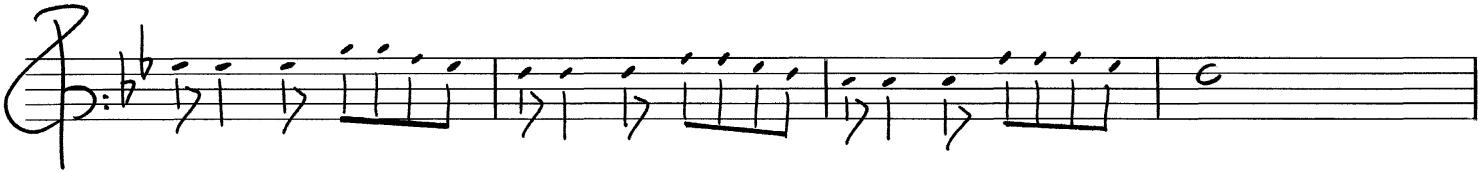
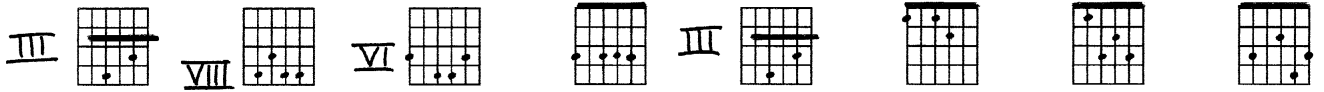
Handwritten guitar chord diagrams for Cm7, F7^{b9}, Bb7M, and Bb6. Roman numerals III, VIII, VI, and VI are written below the diagrams for Cm7, F7^{b9}, Bb7M, and Bb6 respectively.

Handwritten musical notation for the fourth line of the song, concluding the melody with slurs, accents, and triplet markings (3) under the first, fourth, and seventh measures.

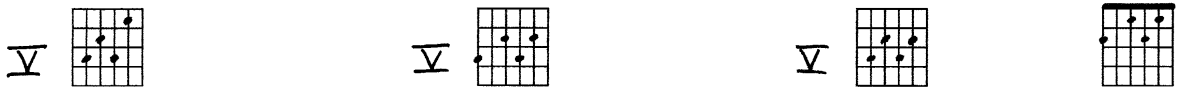
Cm7 D7b9 Gm7 Gm6 Cm6 D7b9 Gm7 G7



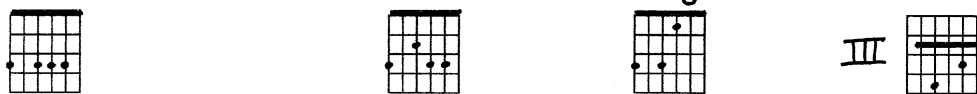
Cm7 F9 Bb7M Gm7 Cm7 F7 Bb7M Cm6



D7 A° D7b9 F#°



Gm7 Gm6 G7b9 Cm7



D7b9 Gm7

