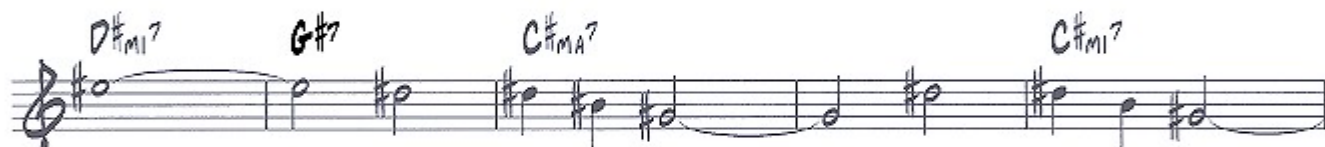
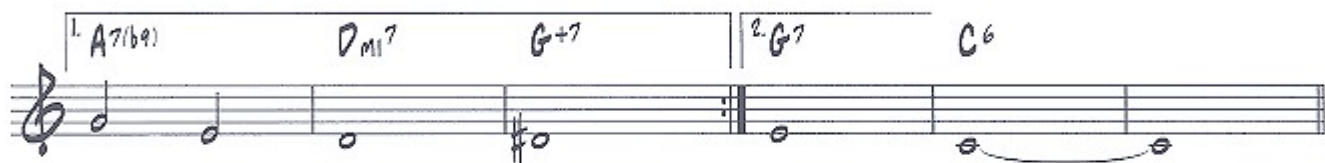
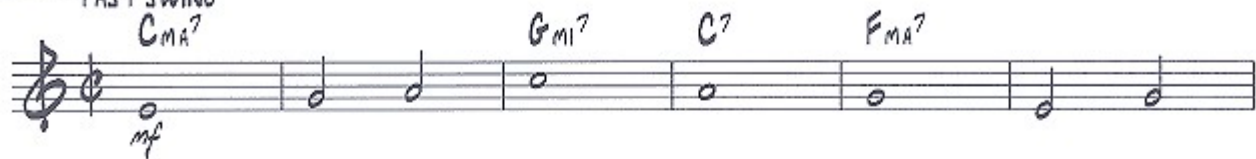


CHEROKEE

(INDIAN LOVE SONG)

MUSIC BY RAY NOBLE

B \flat VERSION FAST SWING



TO CODA  C⁶_A

SOLOS (2 FULL CHORUSES)

C^{MA7}

G



Musical staff with notes and slurs. The first measure contains a quarter note G4, followed by a quarter rest. The second measure contains a quarter note A4 with an accent (^) above it. The rest of the staff is filled with slurs.

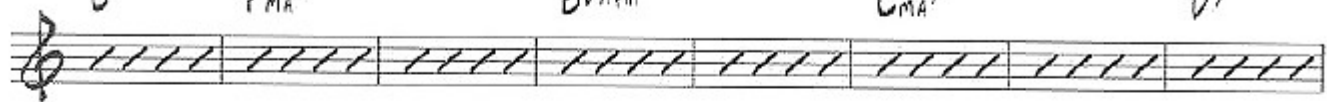
C⁷

F^{MA7}

B^{b9}(E11)

C^{MA7}

D⁷



Musical staff with slurs. The staff is filled with slurs corresponding to the chords listed above.

D^{MI7}

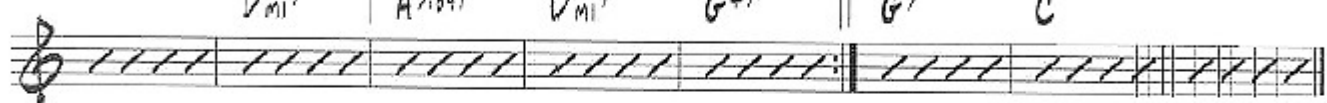
1. A⁷(b9)

D^{MI7}

G⁺⁷

2. G⁷

C



Musical staff with slurs. The staff is filled with slurs corresponding to the chords listed above.

D^{#MI7}

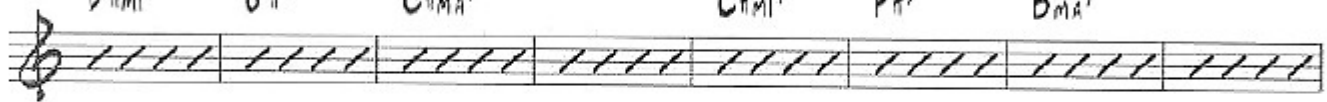
G^{#7}

C^{#MA7}

C^{#MI7}

F^{#7}

B^{MA7}



Musical staff with slurs. The staff is filled with slurs corresponding to the chords listed above.

B^{MI}

E⁷

A^{MA7}

A^{MI7}

D⁷

D^{MI7}

G⁺⁷




Musical staff with slurs. The staff is filled with slurs corresponding to the chords listed above.

G

C⁷

B^{b9}(E11)



Musical staff with slurs. The staff is filled with slurs corresponding to the chords listed above.

D⁷

D

G⁷

C

C. AL CODA
TAKE REPEAT



Musical staff with slurs. The staff is filled with slurs corresponding to the chords listed above.

 CODA

C⁶

C^{#13}(E11)

C¹³(E11)



Musical staff with notes and slurs. The staff contains notes for C4, G4, and F4, with slurs and accents. The final measure has a fermata over a whole note G4.