

Xerxes

a concert march

(2010)

John Mackey

Commissioned by Midlothian High School
Larry Doran, Director of Bands

Instrumentation

Piccolo

2 Flutes (can be doubled)

Oboe (can be doubled)

2 Bassoons

Contrabassoon

Clarinet in Eb

3 Clarinets in Bb

2 Bass Clarinets in Bb

Contrabass Clarinet in Bb

Soprano Sax

Alto Sax

Tenor Sax

Baritone Sax

3 Trumpets in Bb

4 French Horns

4 Trombones (minimum of 3 Tenor, 1 Bass; additional players may be added)

Euphonium (2 preferred)

Tuba (2 or more preferred)

Percussion (7 players)

Player 1: Timpani (4 standard drums)

Player 2: Xylophone, Marimba, Tambourine

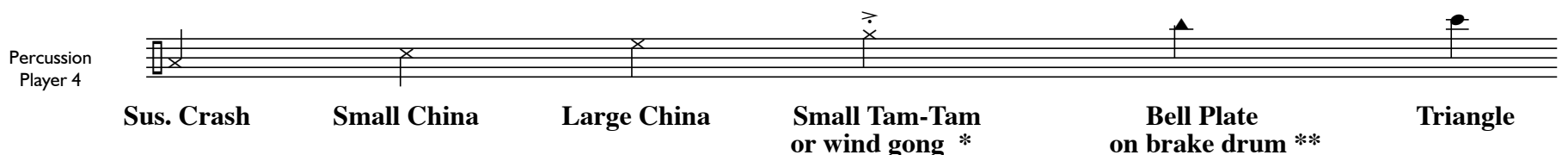
Player 3: Crash Cymbals, Crotales (only Bb and F are needed), and Tambourine

Player 4: Suspended Crash Cymbal, Small China, Large China, Small Tam-Tam *,
Bell Plate on top of Brake Drum **, Triangle (see key)

Player 5: Snare Drum

Player 6: Tam-Tam and Large Tom-Tom

Player 7: Bass Drum



* Tam-tam should be a size that is easily played "secco," with almost immediate attack and equally quick choke time. Do NOT use a China cymbal; the sound required must be richer and lower in relative pitch than a China cymbal. If a small or medium tam-tam does not work well, a wind gong or comparable gong can be substituted. Note that the beater that you use for this tam-tam will also be used on the cymbals.

** Place a bell plate on top of a brake drum, and strike the brake drum with a claw hammer or other metal beater. A "bell plate" is requested because it is extremely resonant. Do NOT simply put any piece of metal on top of the brake drum. Bell plates are ideal because of their resonance, and because their weight is good for this effect. (The bell plate, when struck, will buzz very briefly against the top of the brake drum, but should be too heavy to actually bounce off.)

Picc.
 Fl. 1
 Fl. 2
 Ob.
 Bsn.
 C. Bn.
 E♭ Cl.
 Clar. 1
 Clar. 2-3
 Bs. Cl.
 Cb. Cl.
 S. Sax.
 A. Sax.
 T. Sax.
 B. Sax.
 Tpt. 1
 Tpt. 2-3
 Horn 1-2
 Horn 3-4
 Tbn. 1
 Tbn. 2
 Tbn. 3-4
 Euph.
 Tuba
 Timp.
 Xylo.
 Cymb.
 Perc.
 Snare
 Tam-Tam
 BD

Musical score for a large orchestra, featuring woodwinds, brass, and percussion. The score is divided into two systems, with the second system starting at measure 6. The first system includes Piccolo, Flutes 1 and 2, Oboe, Bassoon, Contrabassoon, E-flat Clarinet, Clarinets 1, 2, and 3, Bass Clarinet, Contrabass Clarinet, Saxophones (Soprano, Alto, Tenor, Baritone), Trumpets 1 and 2-3, Horns 1-2 and 3-4, Trombones 1, 2, and 3-4, Euphonium, and Tuba. The second system includes Timpani, Xylophone, Cymbals, Percussion, Snare, Tam-Tam, and Bass Drum. The score contains various musical notations such as dynamics (*ff*, *f*, *mf*), articulation (accents, slurs), and performance instructions (Sno, Sgr).

This page of a musical score is divided into two systems. The first system includes the Piccolo, Flutes 1 and 2, Oboe, Bassoon, Contrabassoon, English Clarinet, Clarinet 1, Clarinets 2-3, Bass Clarinet, Contrabass Clarinet, Soprano Saxophone, Alto Saxophone, Tenor Saxophone, and Bass Saxophone. The second system includes Trumpets 1 and 2-3, Horns 1-2 and 3-4, Trombones 1, 2, and 3-4, Euphonium, Tuba, Timpani, Xylophone, Cymbals, Percussion, Snare, Tam-Tam, and Bass Drum.

Key musical features include:

- Flutes 1 and 2:** Play a melodic line with a *ff* dynamic and a trill. The first staff has a triplet of eighth notes and a sextuplet of sixteenth notes.
- Clarinet 1:** Features a *ff* dynamic and a trill.
- Clarinet 2-3:** Features a *ff* dynamic and a trill.
- Snare:** Plays a complex rhythmic pattern with triplets and sextuplets, marked with *ff* and *f* dynamics.
- Tam-Tam:** Plays a rhythmic pattern with triplets and sextuplets, marked with *ff* and *mf* dynamics.
- Timpani:** Features a *ff* dynamic and a *f* dynamic.
- Xylophone:** Features a *fff* dynamic and a *f* dynamic.
- Cymbals:** Features a *f* dynamic and a *mf* dynamic.
- Percussion:** Features a *ff* dynamic.
- Snare:** Features a *ff* dynamic.
- Tam-Tam:** Features a *ff* dynamic.
- BD:** Features a *ff* dynamic.

Picc.
 Fl. 1
 Fl. 2
 Ob.
 Bsn.
 C. Bn.
 E♭ Cl.
 Clar. 1
 Clar. 2-3
 Bs. Cl.
 Cb. Cl.
 S. Sx.
 A. Sx.
 T. Sx.
 B. Sx.
 Tpt. 1
 Tpt. 2-3
 Horn 1-2
 Horn 3-4
 Tbn. 1
 Tbn. 2
 Tbn. 3-4
 Euph.
 Tuba
 Timp.
 Xylo.
 Cymb.
 Perc.
 Snare
 Tam-Tam
 BD

Musical score for page 4 of 16, featuring various instruments and dynamics. The score includes staves for Piccolo, Flutes 1 and 2, Oboe, Bassoon, Contrabassoon, E♭ Clarinet, Clarinets 1 and 2-3, Bass Clarinet, Contrabass Clarinet, Saxophones (Soprano, Alto, Tenor, Baritone), Trumpets 1 and 2-3, Horns 1-2 and 3-4, Trombones 1, 2, and 3-4, Euphonium, Tuba, Timpani, Xylophone, Cymbals, Percussion, Snare, and Tam-Tam/Bass Drum. Dynamics include *mf*, *f*, and *ff*. Performance instructions include "choke" for the Cymbals.

21 **B**

Picc. *ff* *tr* *tr*

Fl. 1 *ff* *tr* *tr*

Fl. 2 *ff* *tr* *tr*

Ob. *ff*

Bsn. *f*

C. Bn. *f*

E♭ Cl. *ff* *tr* *tr*

Clar. 1 *ff* *tr* *tr*

Clar. 2-3 *ff* *a2* *tr* *tr*

Bs. Cl. *f*

Cb. Cl. *f*

S. Sx. *f*

A. Sx. *f*

T. Sx. *f*

B. Sx. *f*

Tpt. 1 *ff* *(h)*

Tpt. 2-3 *ff* *(h)*

Horn 1-2 *ff* *a2* *rip* *rip*

Horn 3-4 *ff* *a2* *rip* *rip*

Tbn. 1 *f*

Tbn. 2 *f*

Tbn. 3-4 *f*

Euph. *ff*

Tuba *f*

B

Timp. *ff* *f*

Xylo. *mf* *mf*

Cymb. *mf*

Perc. *f*

Snare *f*

Tam-Tam *f*

BD *f*

Picc.
 Fl. 1
 Fl. 2
 Ob.
 Bsn.
 C. Bn.
 E♭ Cl.
 Clar. 1
 Clar. 2-3
 Bs. Cl.
 Cb. Cl.
 S. Sx.
 A. Sx.
 T. Sx.
 B. Sx.
 Tpt. 1
 Tpt. 2-3
 Horn 1-2
 Horn 3-4
 Tbn. 1
 Tbn. 2
 Tbn. 3-4
 Euph.
 Tuba
 Timp.
 Xylo.
 Cymb.
 Perc.
 Snare
 Tam-Tam
 BD

Musical score for a symphony orchestra, page 26, rehearsal mark C. The score includes parts for Piccolo, Flutes 1 and 2, Oboe, Bassoon, Contrabassoon, E-flat Clarinet, Clarinets 1 and 2-3, Bass Clarinet, Contrabass Clarinet, Saxophones (Soprano, Alto, Tenor, Baritone), Trumpets 1 and 2-3, Horns 1-2 and 3-4, Trombones 1, 2, and 3-4, Euphonium, Tuba, Timpani, Xylophone, Cymbals, Percussion, Snare, Tam-Tam, and Bass Drum. The score features various dynamics such as *mf*, *f*, and *rip*, and includes performance instructions like *a2* and *mf*. The percussion section includes complex rhythmic patterns with triplets and sextuplets.

31

Picc. *f* $\underline{3}$
 Fl. 1 *f* $\underline{3}$
 Fl. 2
 Ob.
 Bsn. *cresc.*
 C. Bn. *cresc.*
 E♭ Cl. *ff*
 Clar. 1 *ff* *mf* *cresc.*
 Clar. 2-3 *ff* *mf* *cresc.*
 Bs. Cl. *cresc.*
 Cb. Cl. *cresc.*
 S. Sx. *fp* *ff* *mf* *cresc.*
 A. Sx. *cresc.*
 T. Sx. *cresc.*
 B. Sx. *cresc.*
 Tpt. 1 *fp* *ff* *f* *cresc.*
 Tpt. 2-3 *fp* *ff* *f* *cresc.*
 Horn 1-2 *rip*
 Horn 3-4 *rip*
 Tbn. 1 *f* *cresc.*
 Tbn. 2 *f* *cresc.*
 Tbn. 3-4 *f* *cresc.*
 Euph. *f* *cresc.*
 Tuba *cresc.*
 Timp.
 Xylo. $\underline{3}$ $\underline{6}$ $\underline{3}$ $\underline{6}$
 Cymb. *ff*
 Perc.
 Snare $\underline{3}$ $\underline{3}$ $\underline{6}$ $\underline{6}$ $\underline{6}$ $\underline{6}$ *f* $\underline{3}$ $\underline{3}$ $\underline{6}$
 Tam-Tam *mf* *cresc.* $\underline{3}$ $\underline{6}$ $\underline{3}$ $\underline{3}$ $\underline{3}$ $\underline{6}$
 BD $\underline{3}$ $\underline{6}$ $\underline{3}$ $\underline{6}$

Picc. *f* *ff*
 Fl. I *ff*
 Fl. 2 *ff*
 Ob. *ff*
 Bsn. *ff*
 C. Bn. *ff*
 E♭ Cl. *f* *ff*
 Clar. I *ff*
 Clar. 2-3 *ff*
 Bs. Cl. *ff*
 Cb. Cl. *ff*
 S. Sx. *tr*
 A. Sx. *tr*
 T. Sx. *ff*
 B. Sx. *ff*
 Tpt. I *f* *ff*
 Tpt. 2-3 *f* *ff*
 Horn I-2 *ff*
 Horn 3-4 *ff*
 Tbn. 1 *ff*
 Tbn. 2 *ff*
 Tbn. 3-4 *ff*
 Euph. *ff*
 Tuba *ff*
 D
 Timp. *ff*
 Xylo. *mf* *ff*
 Cymb. *f*
 Perc. *ff*
 Snare *ff*
 Tam-Tam *f*
 BD *ff*

41

Picc.

Fl. 1

Fl. 2

Ob.

Bsn.

C. Bn.

E♭ Cl.

Clar. 1

Clar. 2-3

Bs. Cl.

Cb. Cl.

S. Sx.

A. Sx.

T. Sx.

B. Sx.

Tpt. 1

Tpt. 2-3

Horn 1-2

Horn 3-4

Tbn. 1

Tbn. 2

Tbn. 3-4

Euph.

Tuba

Timp.

Xylo

Cymb.

Perc.

Snare

Tam-Tam

BD

51

Picc.

Fl. 1

Fl. 2

Ob.

Bsn.

C. Bn.

Oboe

Clar. 1

Clar. 2-3

Bs. Cl.

Cb. Cl.

S. Sx.

A. Sx.

T. Sx.

B. Sx.

Tpt. 1

Tpt. 2-3

Horn 1-2

Horn 3-4

Tbn. 1

Tbn. 2

Tbn. 3-4

Euph.

Tuba

F

Timp.

Mba.

Tamb.

Perc.

Snare

Tam-Tam

BD

Marimba

Triangle

scrape, sim.

snare, off

64

Picc.

Fl. 1

Fl. 2

Ob.

Bsn.

C. Bn.

E♭ Cl.

Clar. 1

Clar. 2-3

Bs. Cl.

Cb. Cl.

S. Sx.

A. Sx.

T. Sx.

B. Sx.

Tpt. 1

Tpt. 2-3

Horn 1-2

Horn 3-4

Tbn. 1

Tbn. 2

Tbn. 3-4

Euph.

Tuba

Timp.

Mba.

Crot.

Perc.

Snare

Tam-Tam

BD

p

pp

pp

scrape, sim.

p

H

Picc. *mf*

Fl. 1 *p*

Fl. 2 *p*

Ob. *mf*

Bsn. *p*

C. Bn. *p*

E♭ Cl. *p*

Clar. 1 *p*

Clar. 2-3 *p*

Bs. Cl. *p*

Cb. Cl. *p*

S. Sx. *mf*

A. Sx. *mf*

T. Sx.

B. Sx. *p*

Tpt. 1

Tpt. 2-3

Horn 1-2 *n.*

Horn 3-4

Tbn. 1

Tbn. 2

Tbn. 3-4

Euph.

Tuba

H

Timp.

Mba.

Crot.

Perc.

Snare

Tam-Tam *mp* *pp* *mp* *p* *p* *mp*

BD *p*

scrape, sim.

mallet

scrape, sim.

I

76

Picc. *mp*

Fl. 1

Fl. 2

Ob.

Bsn. *p*

C. Bn. *mp*

E♭ Cl. *mp*

Clar. 1

Clar. 2-3

Bs. Cl.

Cb. Cl. *mp*

S. Sx. *mp*

A. Sx.

T. Sx. *mf*

B. Sx. *pp* *mp*

Tpt. 1

Tpt. 2-3

Horn 1-2 *p*

Horn 3-4

Tbn. 1 *ppp* con sord. - practice mute *n.*

Tbn. 2 *ppp* con sord. - practice mute *n.*

Tbn. 3-4

Euph.

Tuba

Timp.

Mba. *mf*

Crot.

Perc.

Snare

Tam-Tam *pp* *mp* **Large Tom** *mp*

BD

Picc. *mf*
 Fl. 1
 Fl. 2
 Ob. *mf*
 Bsn. *poco a poco cresc.*
 C. Bn.
 E♭ Cl.
 Clar. 1 *mf*
 Clar. 2-3 *mf*
 Bs. Cl. *mf*
 Cb. Cl. *mf*
 S. Sx. *poco a poco cresc.*
 A. Sx. *poco a poco cresc.*
 T. Sx. *poco a poco cresc.*
 B. Sx.
 Tpt. 1
 Tpt. 2-3
 Horn 1-2 (stopped mute if available) *mf*
 Horn 3-4 (stopped mute if available) *mf*
 Tbn. 1
 Tbn. 2
 Tbn. 3-4
 Euph.
 Tuba
 Timp. *mf*
 Mba. *f*
 Tamb. *f*
 Perc.
 Snare *mf*
 Tom Tom
 BD

Picc. *f* *mf* 6 5
 Fl. 1 *f* *mf* 6 5
 Fl. 2 *ff* 5
 Ob. *ff* 5
 Bsn. *mf* *cresc.*
 C. Bn. *mf* *cresc.*
 E♭ Cl. *mf* 6 5
 Clar. 1 *mf* *cresc.* *mf* 6 5
 Clar. 2-3 *mf* *cresc.* *ff* a2 5
 Bs. Cl. *mf* *cresc.*
 Cb. Cl. *mf* *cresc.*
 S. Sx. *mf* *cresc.* 6 5
 A. Sx. *mf* *cresc.* 6 5
 T. Sx. *mf* *cresc.* 6 5
 B. Sx. *mf* *cresc.*
 Tpt. 1
 Tpt. 2-3
 Horn 1-2 *mp* *f* *p* a2
 Horn 3-4 *p*
 Tbn. 1 *senza sord* *mp* *f*
 Tbn. 2 *senza sord* *mp* *f*
 Tbn. 3-4 *3.* *mp* *f*
 Euph.
 Tuba *f*
 Timp. *J*
 Mba. *mf* Tambourine
 Tamb. *mf*
 Perc.
 Snare *snare on* *f*
 Tom Tom *f*
 BD *f*

K

93

Picc. *ff*

Fl. 1 *ff*

Fl. 2

Ob.

Bsn. *f*

C. Bn. *f*

E♭ Cl. *ff*

Clar. 1 *ff*

Clar. 2-3 *ff*

Bs. Cl. *f*

Cb. Cl. *f*

S. Sx. *ff*

A. Sx. *ff*

T. Sx. *ff*

B. Sx. *f*

Tpt. 1 *ff* con sord. - straight

Tpt. 2-3 *ff* con sord. - straight

Horn 1-2 *f* a 2

Horn 3-4 *f* a 2

Tbn. 1 *f*

Tbn. 2 *f*

Tbn. 3-4 *f*

Euph. *f*

Tuba *f*

K

Timp. *f*

Tamb. *f*

Cymb. *f* Cymbals

Perc. *f*

Snare *f*

Tom Tom

BD

This page of a musical score, marked with rehearsal number 97, features a dense orchestration. The woodwind section includes Piccolo, Flutes 1 and 2, Oboe, Bassoon, Contrabassoon, E♭ Clarinet, Clarinets 1 and 2-3, Bass Clarinet, and Contrabass Clarinet. The saxophone section consists of Soprano, Alto, Tenor, and Baritone saxophones. The brass section is represented by Trumpets 1 and 2-3, Horns 1-2 and 3-4, Trombones 1, 2, and 3-4, Euphonium, and Tuba. The percussion section includes Timpani, Tambourine, Cymbals, Percussion, Snare, Tam-Tam, and Bass Drum. The score is characterized by frequent triplets and dynamic markings such as *cresc.*, *ff*, and *mf*. The key signature has two flats, and the time signature is 4/4.

Picc.
 Fl. 1
 Fl. 2
 Ob.
 Bsn.
 C. Bn.
 E♭ Cl.
 Clar. 1
 Clar. 2-3
 Bs. Cl.
 Cb. Cl.
 S. Sx.
 A. Sx.
 T. Sx.
 B. Sx.
 Tpt. 1
 Tpt. 2-3
 Horn 1-2
 Horn 3-4
 Tbn. 1
 Tbn. 2
 Tbn. 3-4
 Euph.
 Tuba
 Timp.
 Tamb.
 Cymb.
 Perc.
 Snare
 Tam-Tam
 BD

senza sord
rip
ff
tr
3
6
Xylophone
fff
f

Picc.

Fl. 1

Fl. 2

Ob.

Bsn.

C. Bn.

E♭ Cl.

Clar. 1

Clar. 2-3

Bs. Cl.

Cb. Cl.

S. Sx.

A. Sx.

T. Sx.

B. Sx.

Tpt. 1

Tpt. 2-3

Horn 1-2

Horn 3-4

Tbn. 1

Tbn. 2

Tbn. 3-4

Euph.

Tuba

Timp.

Xylo

Cymb.

Perc.

Snare

Tam-Tam

BD

tr

f

ff

rip

M

113

Picc. *f* *3*

Fl. 1 *f* *3*

Fl. 2

Ob. *ff*

Bsn. *mf* *cresc.*

C. Bn. *mf* *cresc.*

E♭ Cl. *ff*

Clar. 1 *ff* *mf* *cresc.*

Clar. 2-3 *ff* *mf* *cresc.*

Bs. Cl. *mf* *cresc.*

Cb. Cl. *mf* *cresc.*

S. Sx. *fp* *ff* *mf* *cresc.*

A. Sx. *mf* *cresc.*

T. Sx. *mf* *cresc.*

B. Sx. *mf* *cresc.*

Tpt. 1 *fp* *ff* *f* *cresc.*

Tpt. 2-3 *fp* *ff* *f* *cresc.*

Horn 1-2 *rip* *ff* *rip* *f*

Horn 3-4 *ff* *f*

Tbn. 1 *f* *cresc.*

Tbn. 2 *f* *cresc.*

Tbn. 3-4 *mf* *cresc.*

Euph. *f* *cresc.*

Tuba *mf* *cresc.*

Timp.

Xylo. *3* *6*

Cymb.

Perc.

Snare *3* *3* *6* *6* *f* *3* *3* *6*

Tam-Tam *mf* *cresc.* *3* *6* *3* *3* *3* *6*

BD

Picc. *f* *ff*
 Fl. 1 *ff*
 Fl. 2 *ff*
 Ob. *ff*
 Bsn. *ff*
 C. Bn. *ff*
 E♭ Cl. *f* *ff*
 Clar. 1 *ff*
 Clar. 2-3 *ff*
 Bs. Cl. *ff*
 Cb. Cl. *ff*
 S. Sx. *tr*
 A. Sx. *tr*
 T. Sx. *ff*
 B. Sx. *ff*
 Tpt. 1 *f* *ff*
 Tpt. 2-3 *f* *ff*
 Horn 1-2 *ff*
 Horn 3-4 *ff*
 Tbn. 1 *ff*
 Tbn. 2 *ff*
 Tbn. 3-4 *ff*
 Euph. *ff*
 Tuba *ff*
 Timp. *ff*
 Xylo. *mf* *ff*
 Cymb. *f*
 Perc. *ff*
 Snare *ff* (be sure not to overpower brass texture)
 Tam-Tam *f*
 BD *ff*

123

Picc.

Fl. 1

Fl. 2

Ob.

Bsn.

C. Bn.

E♭ Cl.

Clar. 1

Clar. 2-3

Bs. Cl.

Cb. Cl.

S. Sx.

A. Sx.

T. Sx.

B. Sx.

Tpt. 1

Tpt. 2-3

Horn 1-2

Horn 3-4

Tbn. 1

Tbn. 2

Tbn. 3-4

Euph.

Tuba

Timp.

Xylo.

Cymb.

Perc.

Snare

Tam-Tam

BD

132

Picc.
 Fl. 1
 Fl. 2
 Ob.
 Bsn.
 C. Bn.
 E♭ Cl.
 Clar. 1
 Clar. 2-3
 Bs. Cl.
 Cb. Cl.
 S. Sx.
 A. Sx.
 T. Sx.
 B. Sx.
 Tpt. 1
 Tpt. 2-3
 Horn 1-2
 Horn 3-4
 Tbn. 1
 Tbn. 2
 Tbn. 3-4
 Euph.
 Tuba
 Timp.
 Xylo.
 Cymb.
 Perc.
 Snare
 Tam-Tam
 BD

139

Picc.
Fl. 1
Fl. 2
Ob.
Bsn.
C. Bn.
E♭ Cl.
Clar. 1
Clar. 2-3
Bs. Cl.
Cb. Cl.
S. Sax.
A. Sax.
T. Sax.
B. Sax.
Tpt. 1
Tpt. 2-3
Horn 1-2
Horn 3-4
Tbn. 1
Tbn. 2
Tbn. 3-4
Euph.
Tuba
Timp.
Xylo.
Cymb.
Perc.
Snare
Tam-Tam
BD